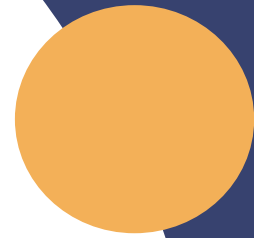




ALASKA
MUNICIPAL
LEAGUE



Alaska Municipal League Coastal Resilience Project

AML
Annual
Conference

December
2024

INTRODUCTIONS

Name

Where You're From

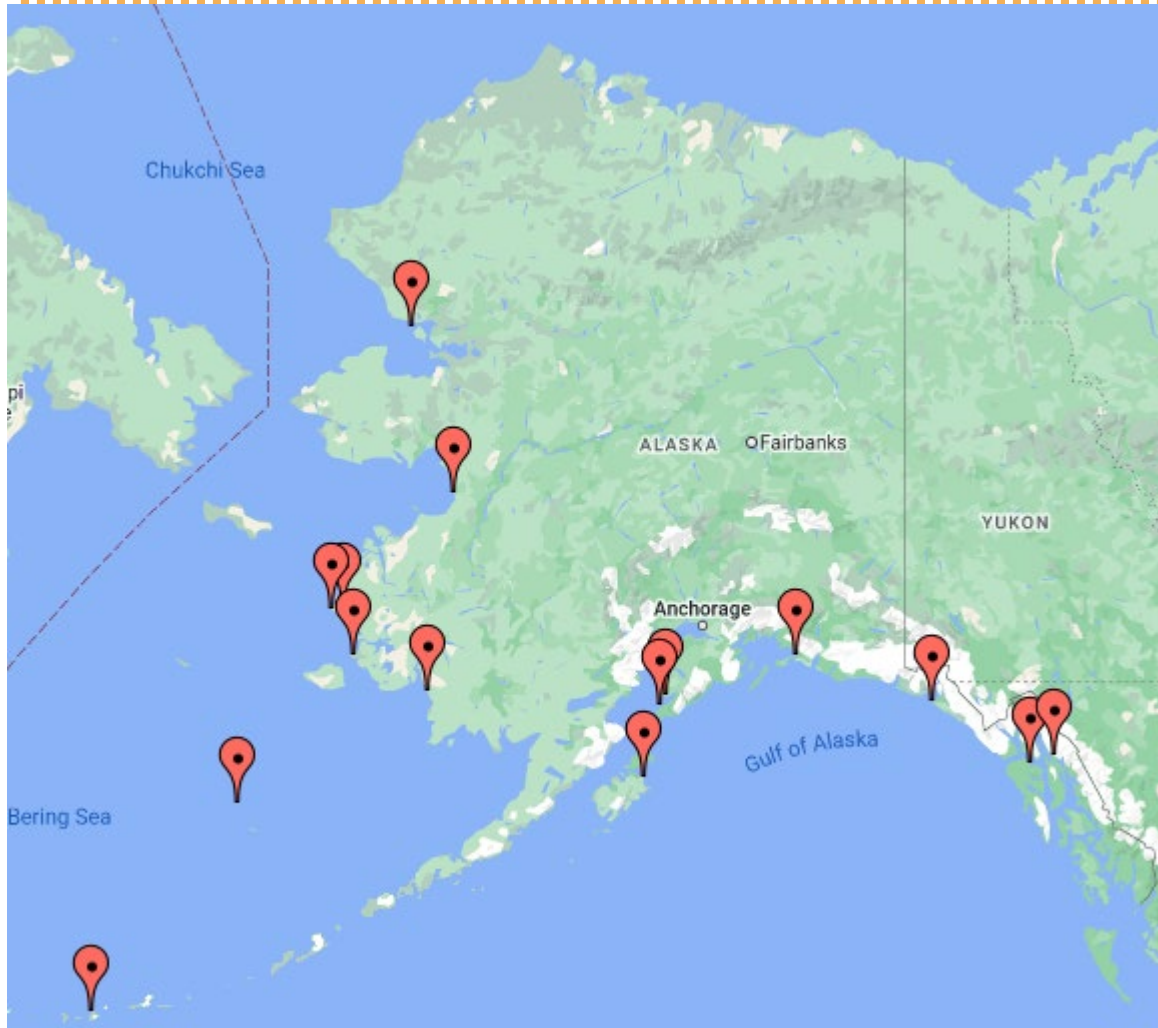
"If you could establish one policy or program to make your community better prepared for the future, what would you do?"

Environmental Justice Collaborative Problem-Solving (EJCPS)

- EPA awarded funding to projects aiming to address environmental or public health issues at the community level
- AML to assist municipalities in conducting health impact assessments and creating climate action and resilience plans
- Focused on building capacity in communities
- **Project Period:** March 2024- January 2027
- **Partner:** University of Alaska Anchorage Institute for Circumpolar Health Studies (ICHS)



Project Cohort



- Adak
- Chevak
- Cordova
- Hoonah
- Hooper Bay
- Juneau
- Kachemak
- Kodiak
- Kotzebue
- Quinhagak
- Saint Paul
- Seldovia
- Toksook Bay
- Unalakleet
- Yakutat

Goal: Maximize benefits of planning in rural, coastal communities

AML staff and UAA partners are working with the project cohort to:

- Identify and share relevant, community-scale data
- Provide additional resources and technical assistance that support the development of other community plans (e.g., HMP, RIP)
- Identify federal funding opportunities for climate resilience
- Produce template and community-specific Health Impact Assessments
- Produce template and community-specific Climate Action and Resilience Plans



Deliverables

Each participant will work with AML and project partners to produce:

- A **community profile** that synthesizes data on social and economic vulnerability and existing plans/capacity (*late 2024/early 2025*)
- A **Health Impact Assessment (HIA)** that describes environmental impacts to local health, based on available data (*developed in 2025*)
- A **Climate Action and Resilience Plan (CARP)** that summarizes historical and projected climate impacts to the community, and includes adaptation strategies (policies and programs) that have been prioritized by community members (*developed in 2026*)

Climate Action &
Resilience Plan

Health Impact
Assessment

Community
Profile

Community Profile Review

Which sections are the most useful in describing your community?

Which sections are the least useful in describing your community?

What information is missing?

What do we mean by...

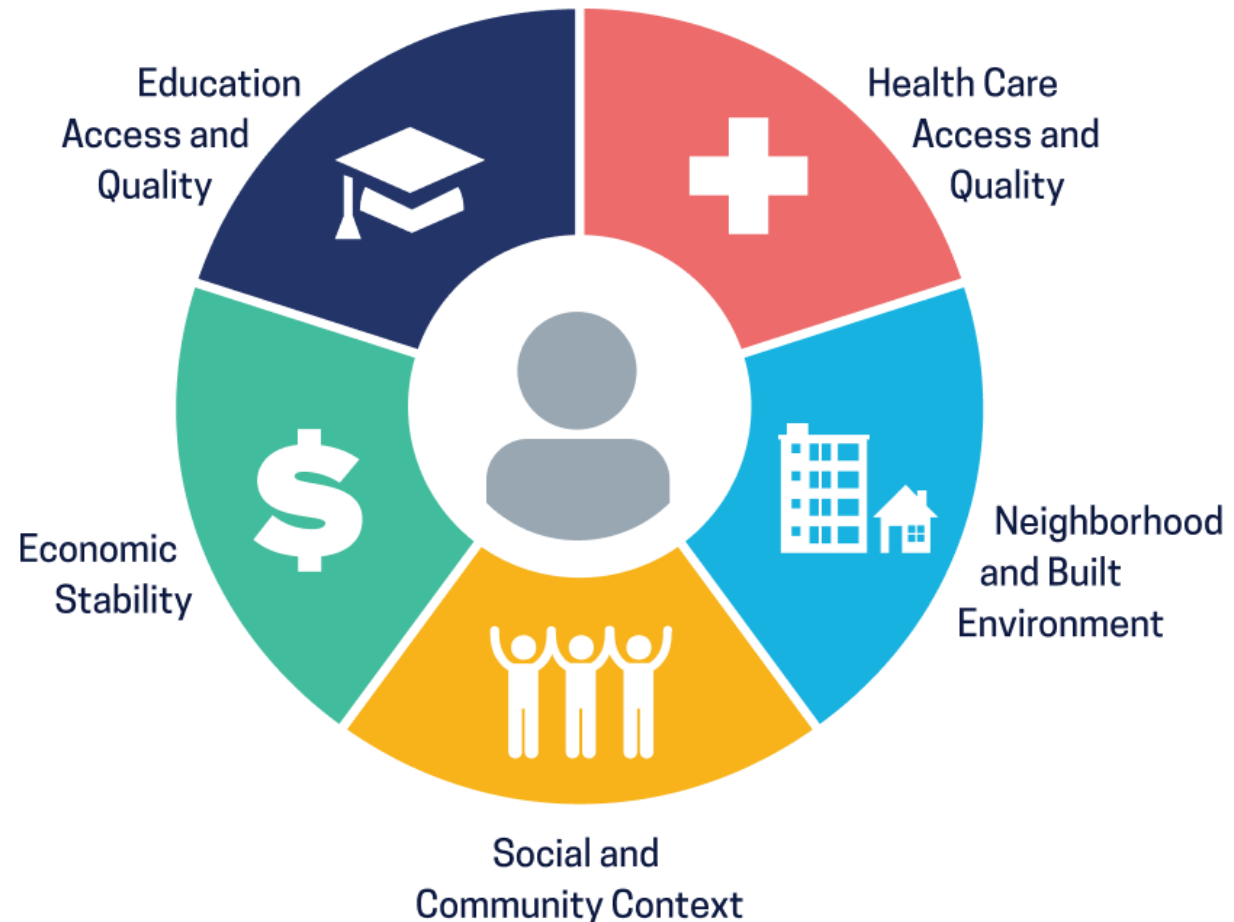
Health Impacts?	Climate Action and Resilience?
<p>Physical environment</p> <ul style="list-style-type: none"> • Land use, transportation, housing, recreation <p>Social environment</p> <ul style="list-style-type: none"> • Public safety, equity, diversity, civic engagement <p>Economic and work environment</p> <ul style="list-style-type: none"> • Employment, income, business/industry <p>Service environment</p> <ul style="list-style-type: none"> • Education, health care, social services, childcare 	<p>Determined at community level, but could include:</p> <ul style="list-style-type: none"> • Hazard mitigation • Disaster preparedness • Energy efficiency and affordability • Food security • Pollution reduction • Economic sustainability • Resilient infrastructure and transportation

What is the link between health, climate change, and local government?

Social determinants of health (SDoH) are the conditions in the environments where people are live that affect a wide range of health and quality-of-life outcomes and risks.

Each of the domains of SDoH is affected by climate change, but local planning and activities can mitigate risk and maximize benefits.

Identifying climate impacts to the SDoH sand prioritizing them for action is a critical step in planning for the future.



Education	Healthcare Access & Quality	Infrastructure	Social & Community Context	Economy
<ul style="list-style-type: none"> • Literacy • Language • Early Childhood Education • Higher Education • Vocational Training 	<ul style="list-style-type: none"> • Health coverage • Provider Availability • Quality of Care • Provider Linguistic and Cultural Competency 	<ul style="list-style-type: none"> • Housing • Transportation • Walkability • Playgrounds • Public Safety 	<ul style="list-style-type: none"> • Social Integration • Support Systems • Community Engagement • Discrimination 	<ul style="list-style-type: none"> • Employment • Income • Debt • Poverty

We are currently recruiting municipal governments to participate in a second cohort, starting in Spring 2025.

THANK YOU



Strengthening Local Governments