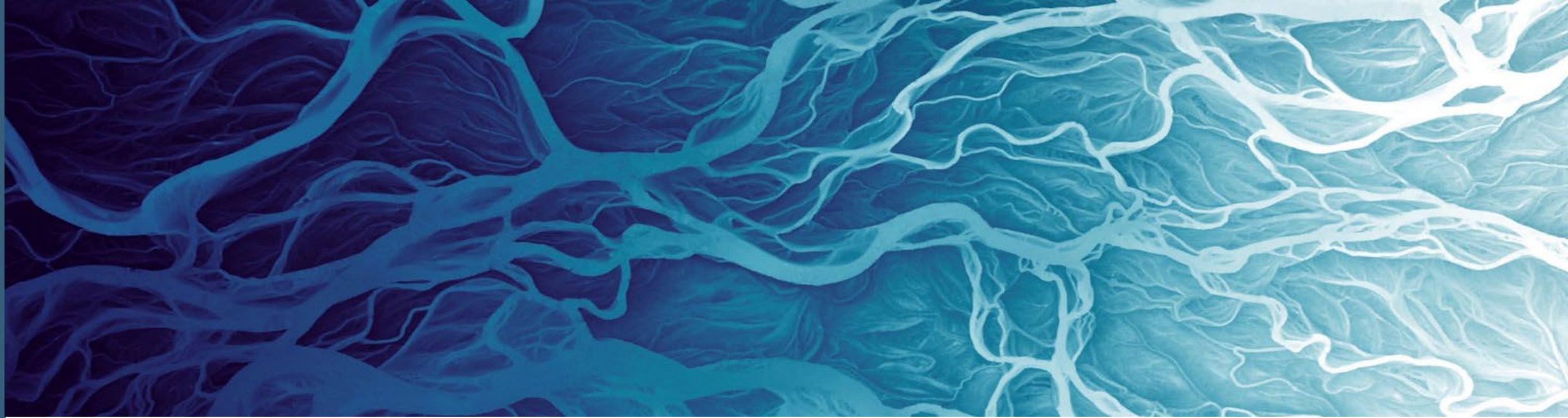


Enabling Data-driven Decisions with Coordination and Mapping



Leslie Jones, PhD

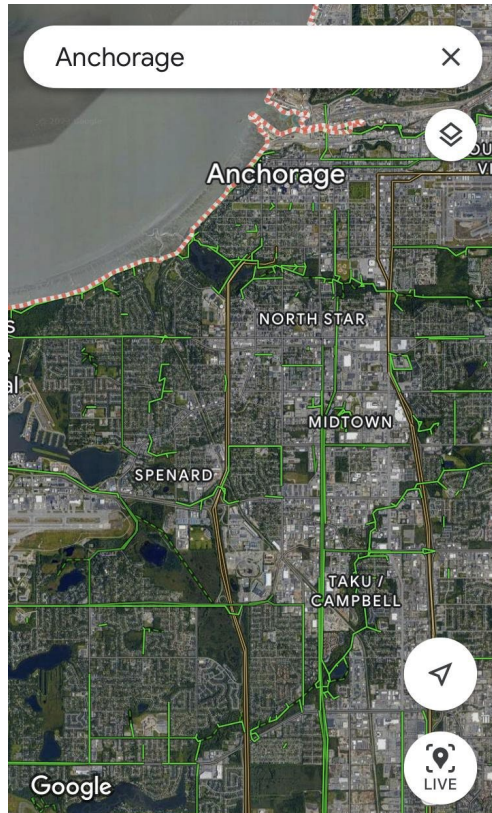
GIO, State of Alaska

Executive Director, Alaska Geospatial Council

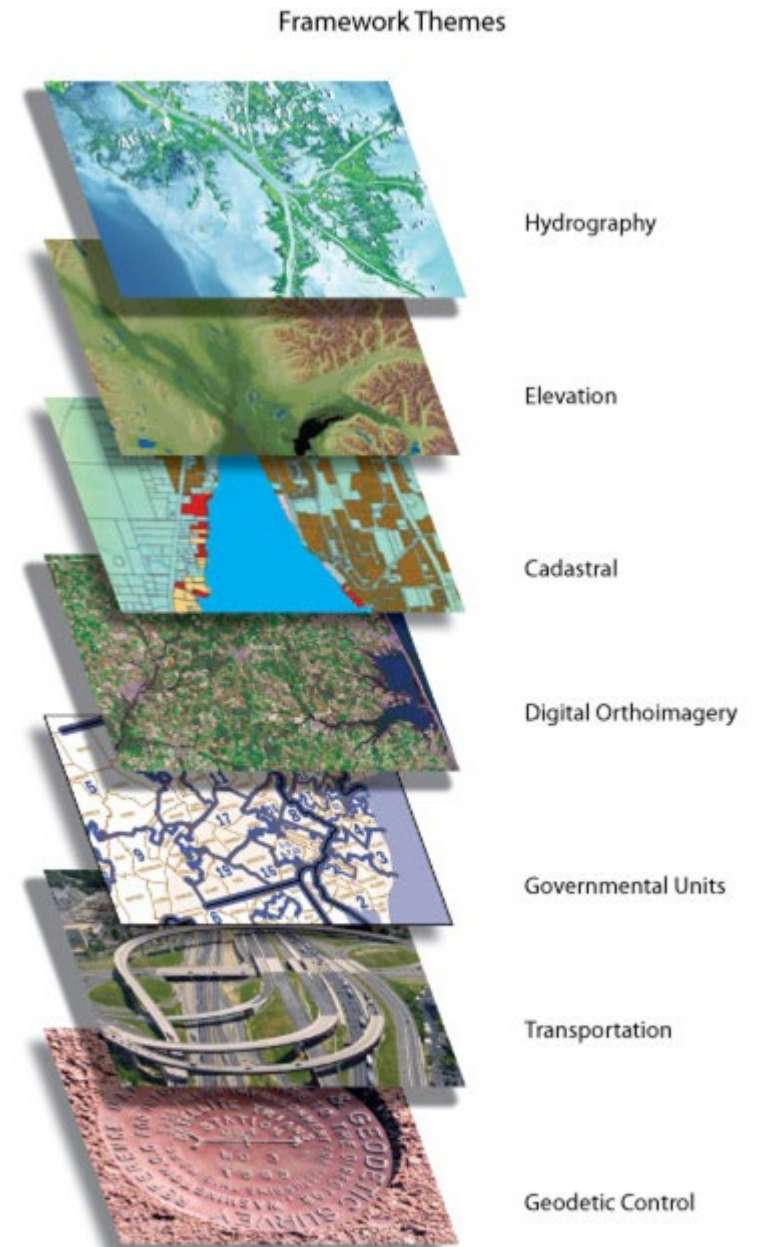


Everything starts with a Map!

Real World →



GIS World →

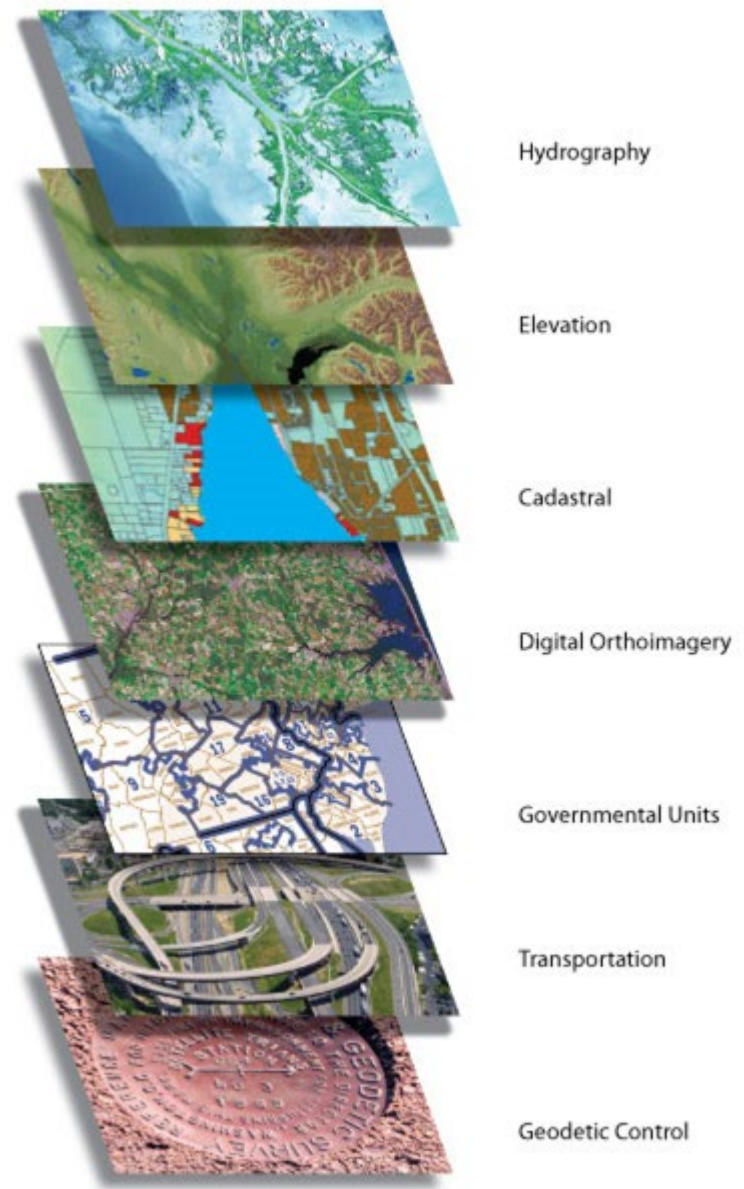


- EVERYTHING has a spatial reference
- Maps are the basis for all decision-making

Filling the Gaps: Statewide Data

- Data doesn't exist
- It exists but isn't accessible
- No consistent statewide version exists
 - ✓ Addressing
 - ✓ Land-ownership

Framework Themes



- Address
- Biodiversity and Ecosystems
- **Cadastral**
- Climate & Weather
- Cultural Resources
- **Elevation**
- **Geodetic Control**
- Geology
- **Governmental Units**
- **Imagery**
- International Boundaries
- Land Use – Land Cover
- Real Property
- Soils
- **Transportation**
- Utilities
- **Water – Inland**
- **Water – Oceans & Coasts**

Reality of Alaska's Data Readiness – what does this mean?

- Lack of consistent statewide data for decision-making
- Wasted resources because we are not prepared
- **DUPLICATION ABOUNDS!!**



GEOSPATIAL MATURITY ASSESSMENT 2023

Alaska Report Card Overall Grade: D+

COORDINATION **GRADE: C**

STATE-LED THEMES **GRADE**

Address	F
Cadastre	N/A
Elevation	N/A
Orthoimagery Leaf-Off	N/A
Transportation	C
NG9-1-1	N/A

FEDERAL-LED THEMES **GRADE**

Geodetic Control	B-
Government Units	F
Orthoimagery Leaf-On	N/A

METRICS:
 A - Superior C - Average F - Failure
 B - Above average D - Below average N/A - Not Applicable

The National States Geographic Information Council Geospatial Maturity Assessment provides NSGIC members and other partners with a summary of geospatial initiatives, capabilities, and issues within and across state governments. The NSGIC GMA now produce report cards for each state on central data themes and coordination topics. The assessment is performed every two years.

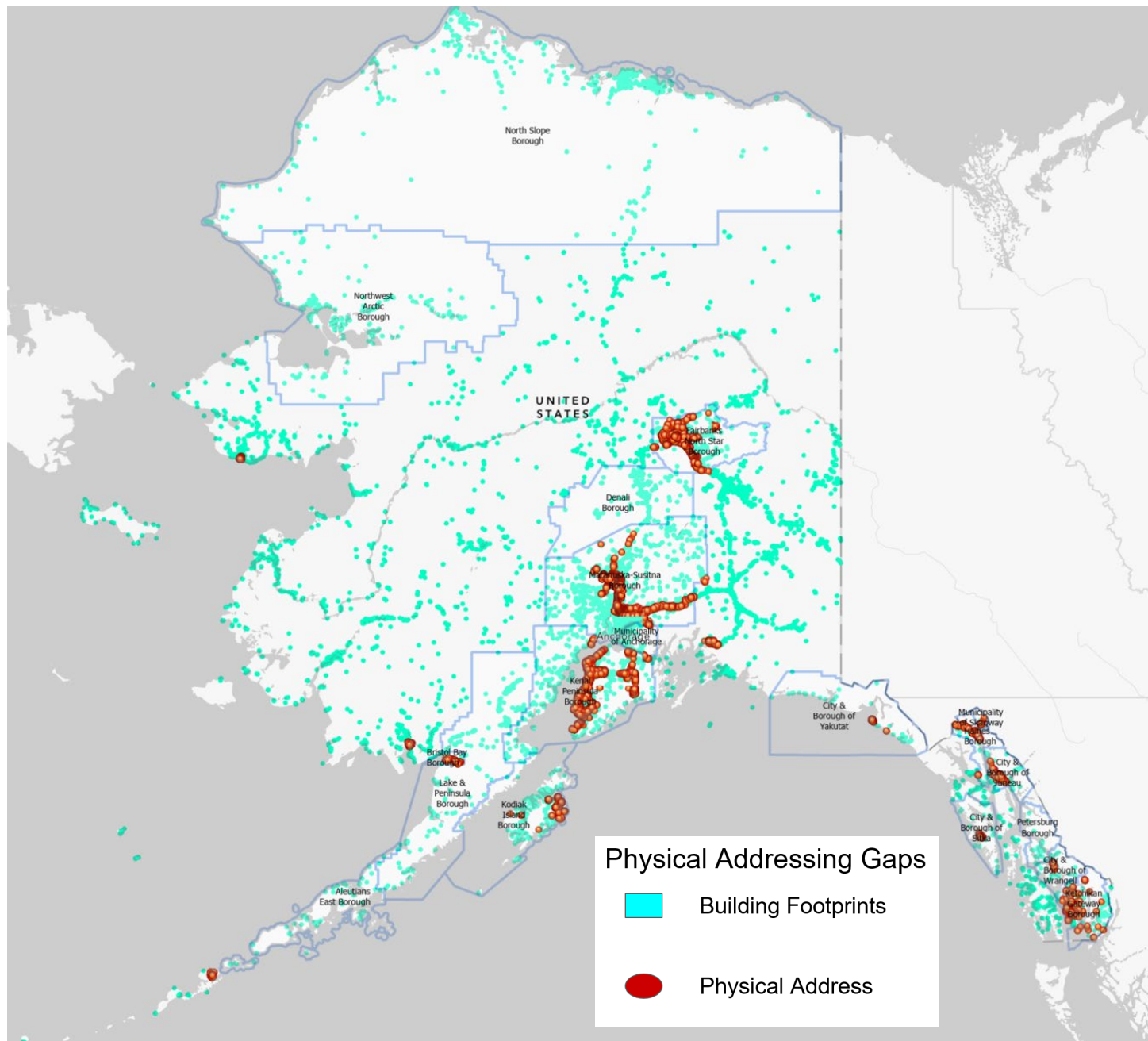
WHY? IS LOCAL DATA MISSING?

Unorganized Borough

- 70% land mass \ Ranks 4th in population
- No local government to create and manage data

Incorporated Boroughs

- Limited capacity and funding



WHAT IS NEEDED TO SUPPORT LOCAL DATA NEEDS?

POLICY

AUTHORITY

GOVERNANCE

FUNDING

GRANT PROGRAMS

Primary Functions



- To support the creation of statewide data layers thru coordination
- Create governance and policy for Alaska's geospatial framework
- Ensure data is FAIR



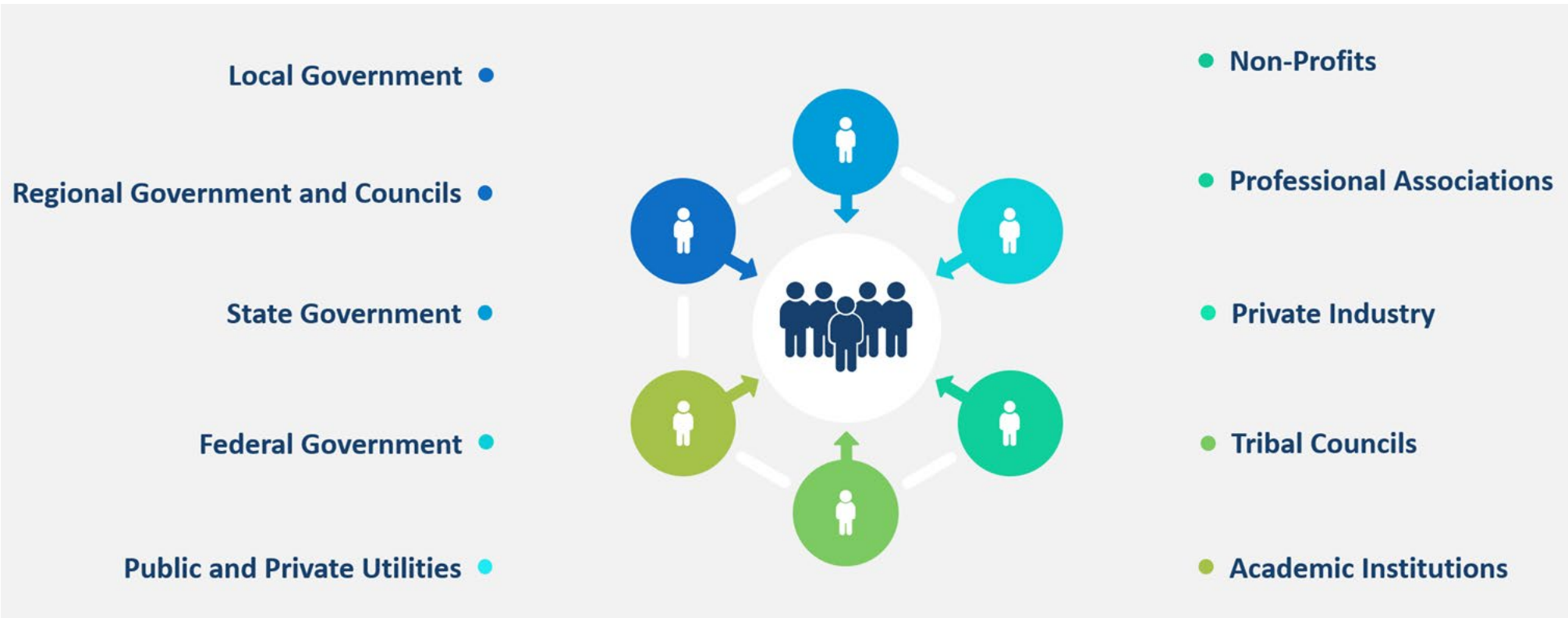
Coordinated Approach to Mapping Alaska

agc.dnr.alaska.gov



Alaska Geospatial Council

*Coordinating across agencies to provide public access to geospatial data and maps critical to decision-making
Supporting economic development and the public safety and well-being of Alaskans*





Mission

Coordinate the development and management of geographic information in Alaska

Pathway for **Public and Private** Engagement



Coastal & Ocean Working Group

[Learn More](#)



Wetlands Working Group

[Learn More](#)



Geodetic Working Group

[Learn More](#)



Vegetation Working Group

[Learn More](#)



Enterprise GIS Working Group

[Learn More](#)



Transportation Working Group

[Learn More](#)



Cadastral Working Group

[Learn More](#)



Imagery and Elevation Working Group

[Learn More](#)



Hydrography Working Group

[Learn More](#)



Soils Working Group

[Learn More](#)



Food Security Working Group

[Learn More](#)



UAS Policy Working Group

[Learn More](#)

Coastal & Ocean Working Group

Aligning coastal and ocean mapping missions with Alaska's people and programs

Publications



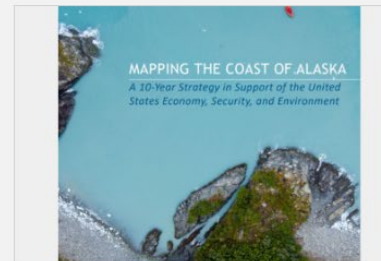
2022 Alaska Coastal and Ocean Summit- Report

The report summarizes the proceedings of the 2021 Alaska...



2021 AK Coastal and Ocean Mapping Summit Report

The report summarizes the proceedings of the 2021 Alaska...



2020 Coastal Mapping Strategy

This report defines four goals to guide near-term action, including...



Alaska Coastal Mapping Gaps and Priorities

This document, from the Department of Geological and Geophysical...



Alaska Coastal Mapping Strategy Implementation Pl...

This report outlines actionable milestones for successful completi...



2019 Alaska Coastal Mapping Prioritization Survey

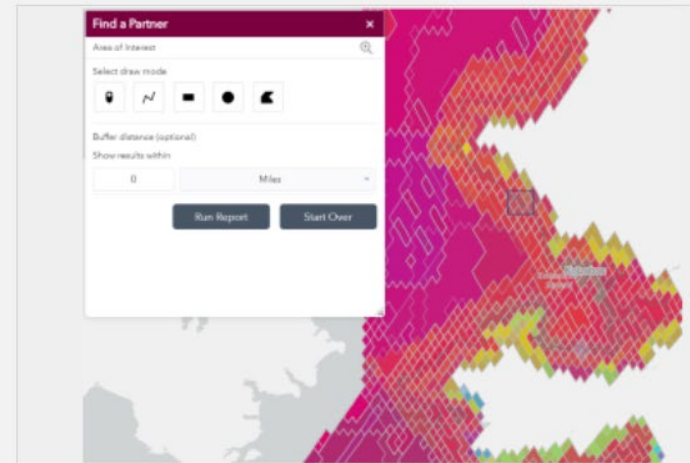
This report outline the results of the 2019 mapping prioritization survey..

Tools and Dashboards



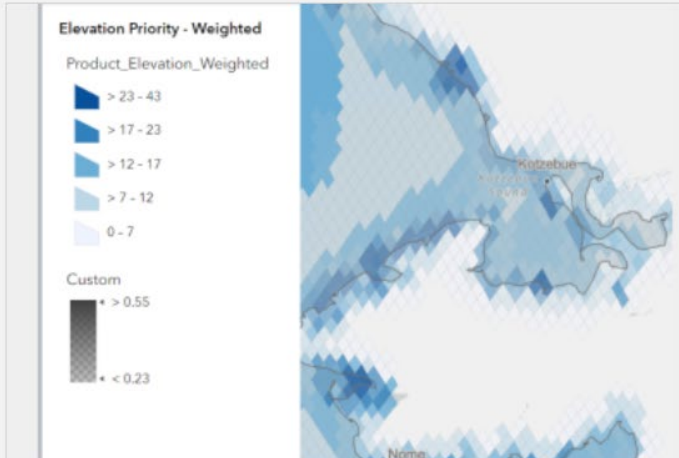
Alaska Coastal Mapping Plan of Action

The mapping plan of action synthesizes the results of the prioritization survey and community mapping areas (a...



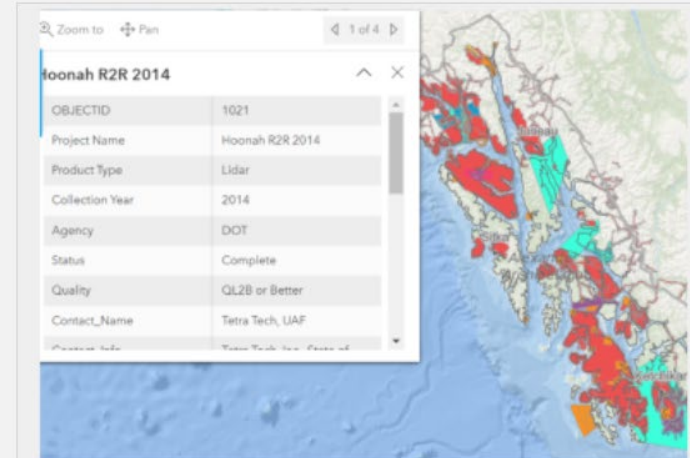
Coastal Mapping Partner Finder Tool

The mapping partner finder tool displays the stakeholder results from the 2021 mapping prioritization survey. This...



Coastal Mapping Prioritization Survey Results

This dashboard displays the results of the 2021 Mapping Prioritization Survey for Alaska's coastal and ocean areas...



Coastal Data Acquisition Dashboard

This dashboard shows all of the planned, funded, in progress, and complete coastal mapping activities for...

Findable



Accessible



Interoperable



Reusable



Data Needs to be FAIR.

Alaska's Data Portals: public access of resources

Coordinate - Collaborate - Innovate - Share

State of Alaska
Open Data Geoportal

Home Imagery Elevation Partnerships Alaska Geospatial Council Get Involved Terms

MAPAK
ALASKA GEOSPATIAL OFFICE

This is a cooperative project coordinated by the Alaska Geospatial Office. The data and services available are hosted by public agencies. Access to the data would not exist without coordination from contributing members.

Q

Framework Datasets

 Transportation	 Imagery	 Parcels	 Geodetic Control
 Hydrography	 Boundaries	 Address	 Elevation

+ State Geoportal
+ Imagery and Elevation portals
gis.data.alaska.gov

Partnerships

Explore Data by Agency or Organization

 Local	 State	 Federal	
-----------	-----------	-------------	--

Local

 Metanulituk-Sustina Borough	 Kenai Peninsula Borough	 Wrangell	 Kodiak Island Borough	 Municipality of Anchorage	
 City of Unalaska	 City & Borough of Juneau	 Denali & Lan	 Department of Fish and Game	 Department of Natural Resources	 Department of Environmental Conservation

State

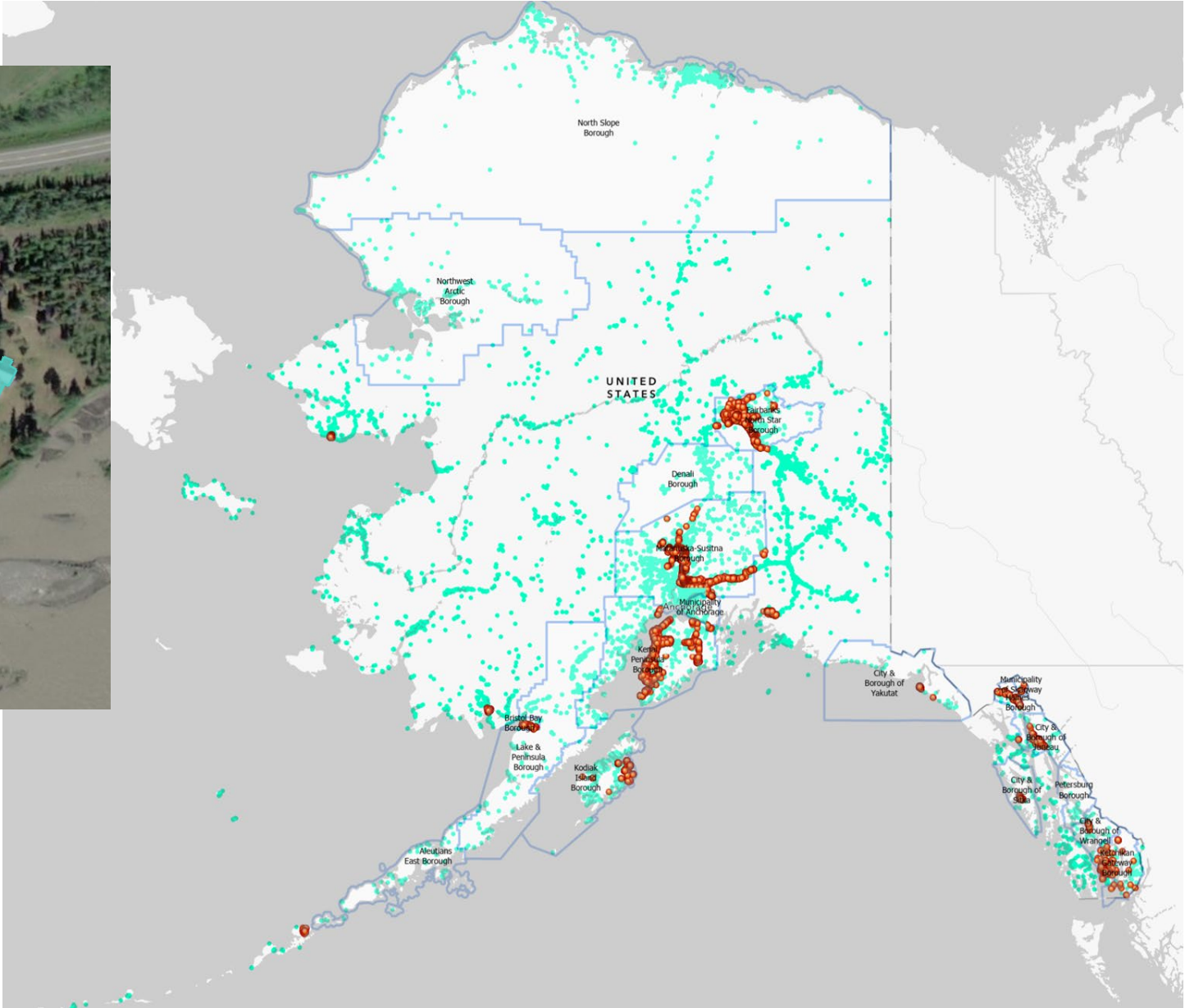
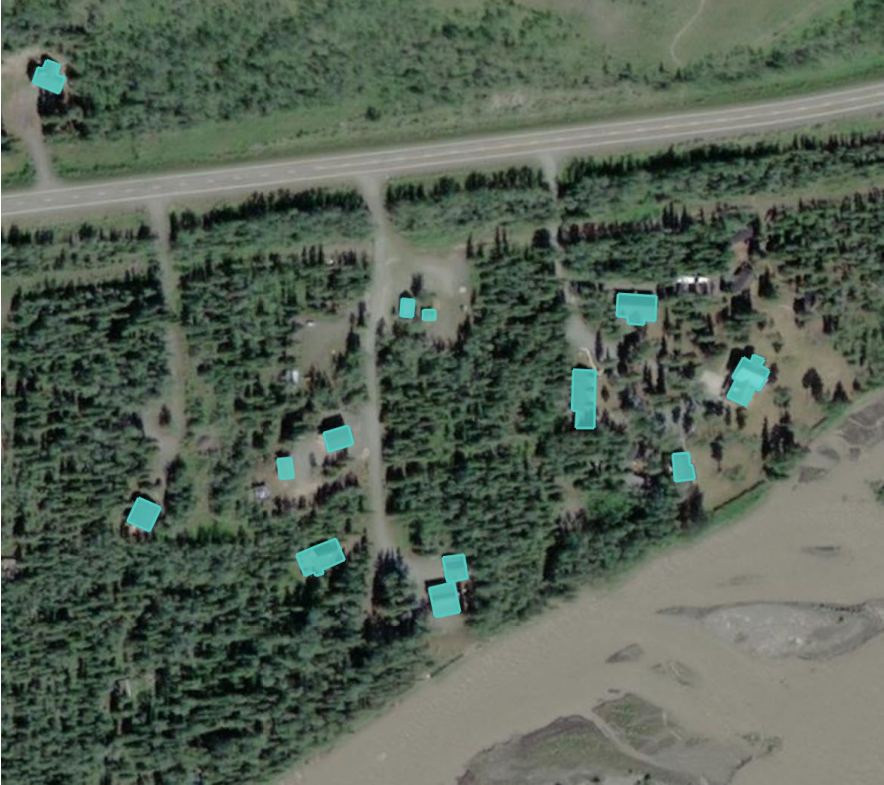
Federal



 Department of Transportation & Public Facilities	 USDA Forest Service, Alaska Region	 BLM Alaska	 NOAA GeoPlatform	 National Park Service	 US Fish & Wildlife Service
--	--	----------------	----------------------	---------------------------	--------------------------------

Other Agencies

 Alaska Center for Conservation Science UNIVERSITY OF ALASKA, ANCHORAGE	 Alaska Ocean Observing System	 North Slope Science Initiative Fostering Science Collaboration on Alaska's North Slope
---	-----------------------------------	---

Building Footprints - restricted



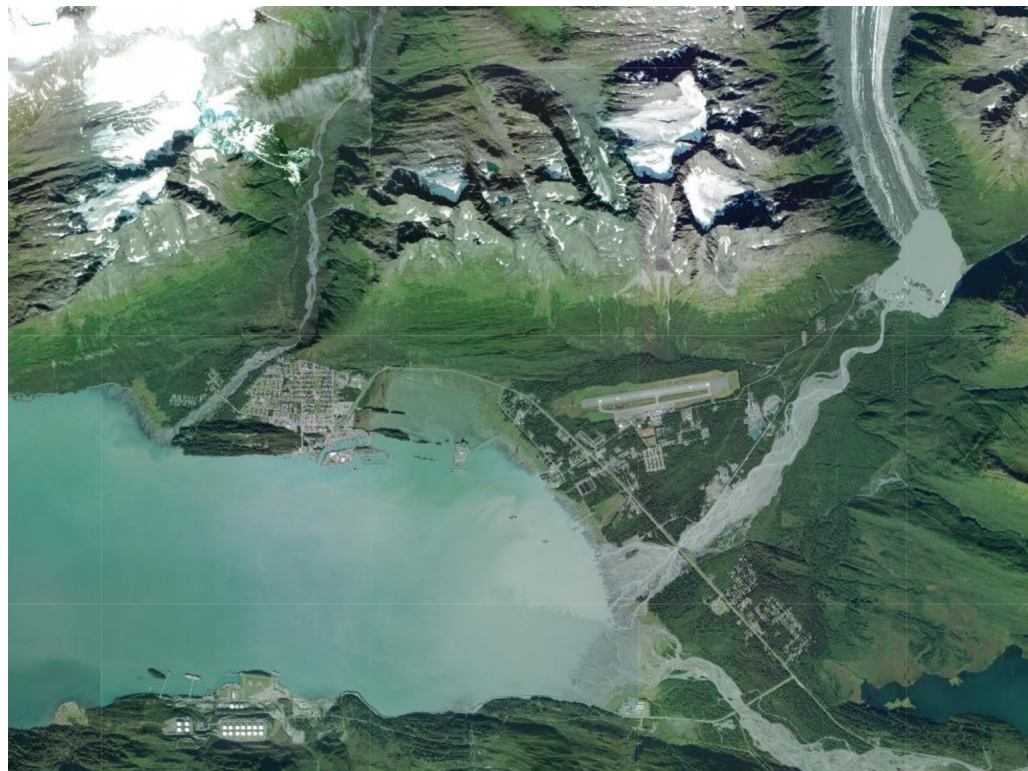
-  Building Footprints
-  Physical Address

Statewide Imagery – Better than Google Maps!

October 2023

18,305 unique users

43,400,000 Data requests



WHO'S USING IMAGERY DATA?

People use our data from all over the country.

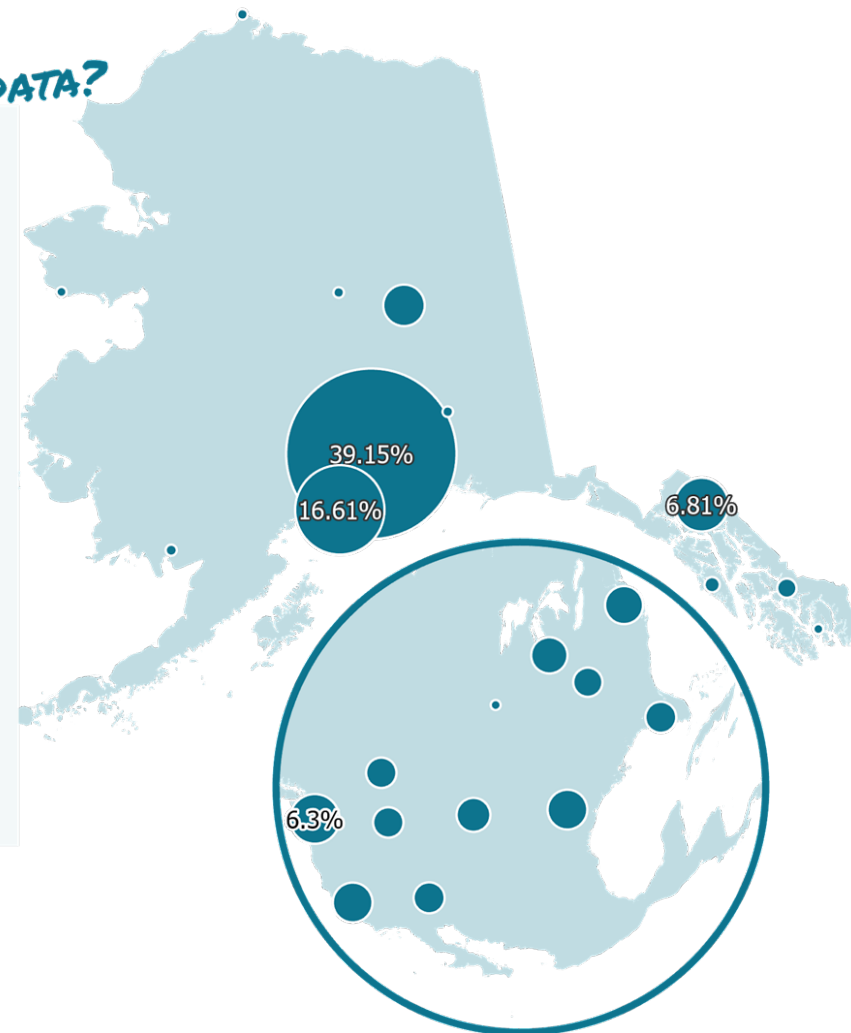
This Year, We Received:

110,000 unique users
Up 500% from last year!

180,000,000 unique visits

25,000 Gigabytes of
Imagery Served

Coverage for over
2,660,000 square miles

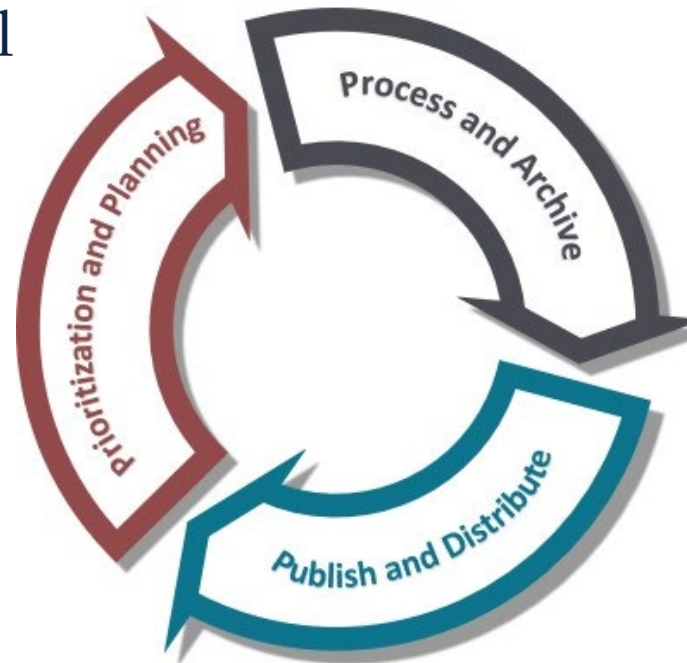


Imagery and Elevation Data Distribution

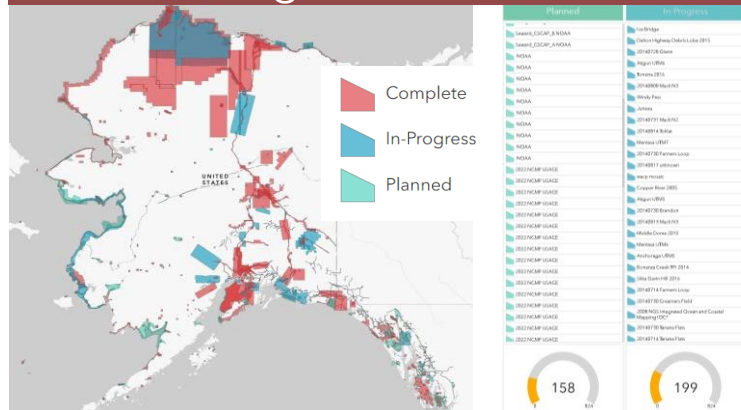
Coordination



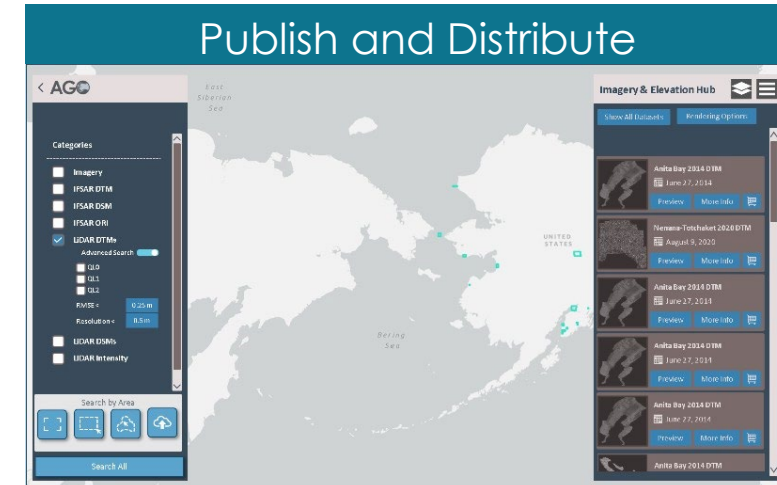
Process and Archive



Planning and Prioritization



Publish and Distribute

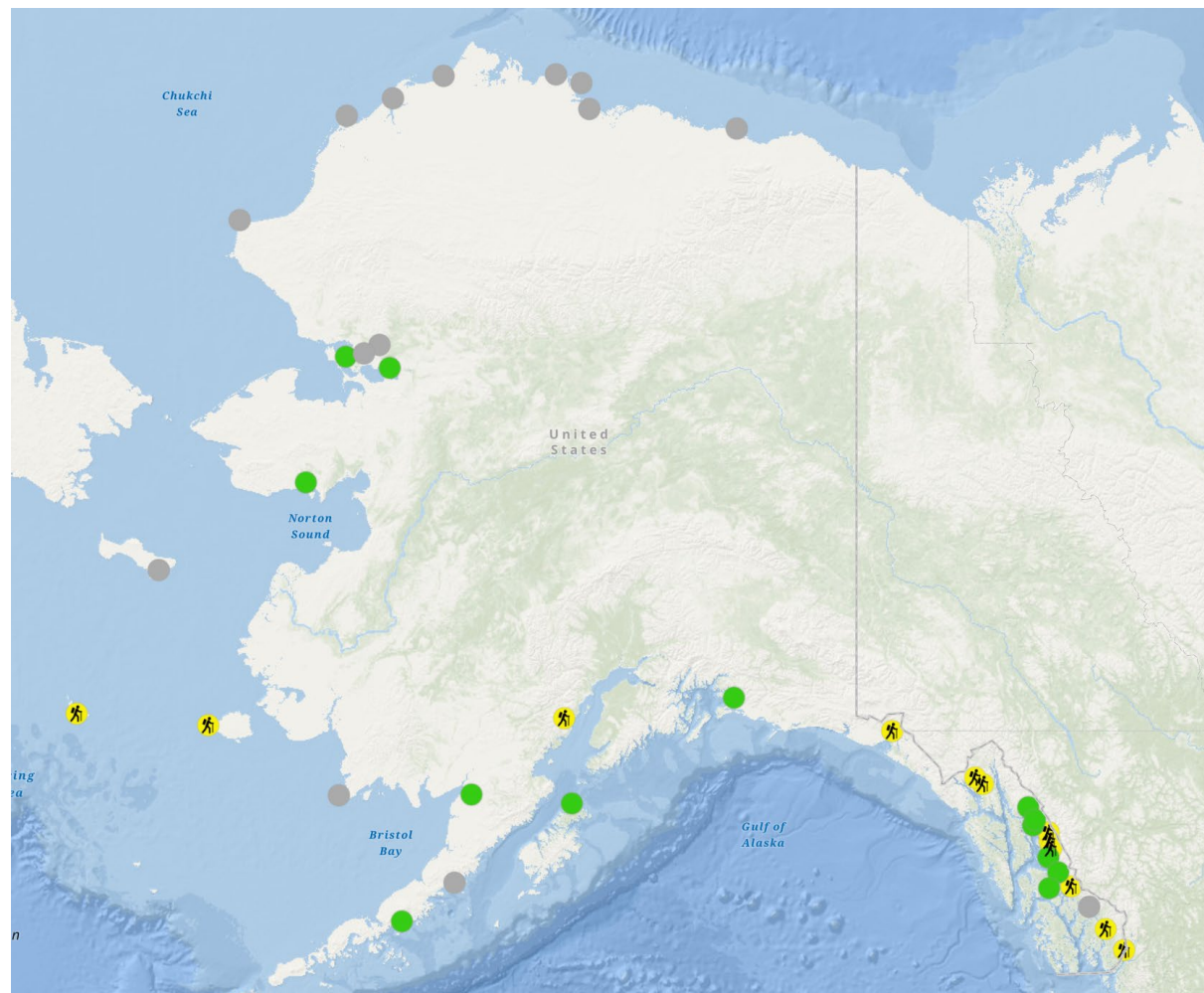


Alaska Geospatial Office - Filling Gaps

LIDAR and Imagery



Water Level Observations



Why State Geospatial Offices and Councils?

DUPLICATION:

In 2020 State of Oregon reported \$250M/year wasted in duplication across State agencies



UPS saves millions by eliminating left turns- applied GIS



EFFICIENCY:

UPS saves \$400M by applying GIS – saving gas and time

IIJA, IRA and BIL WINDFALL

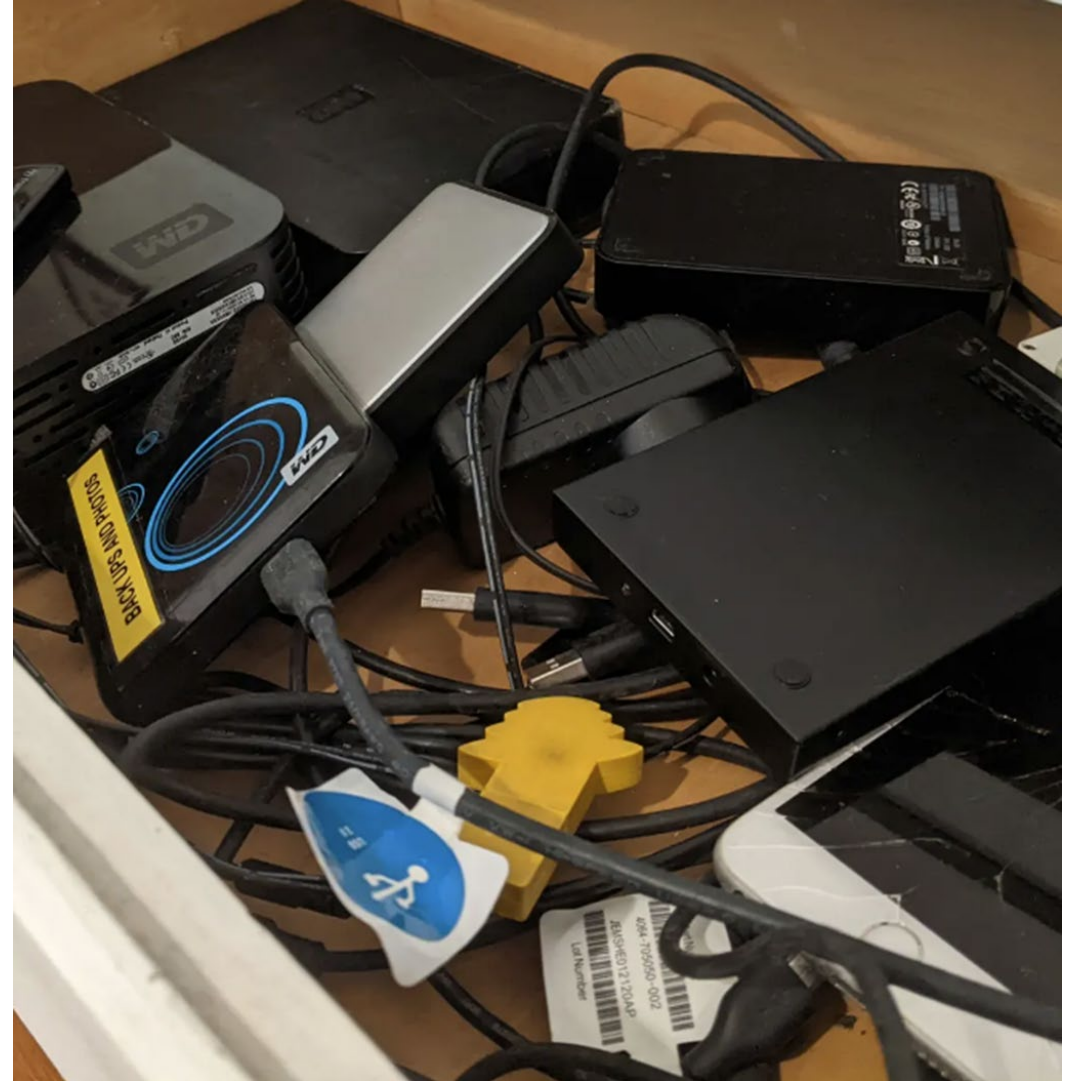
Harness the Opportunities Ahead!

How do we ensure these funds are spent most efficiently OR ensure the data acquired is managed with a long-term vision in mind?

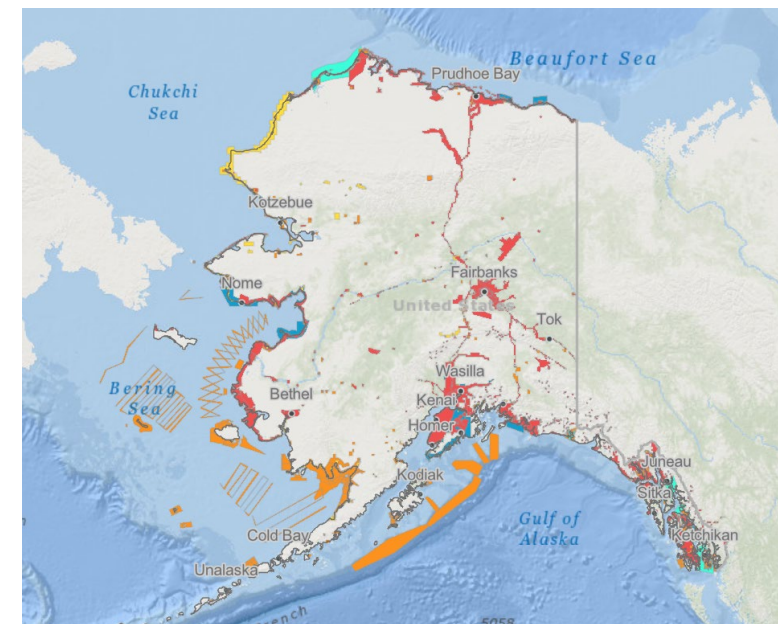
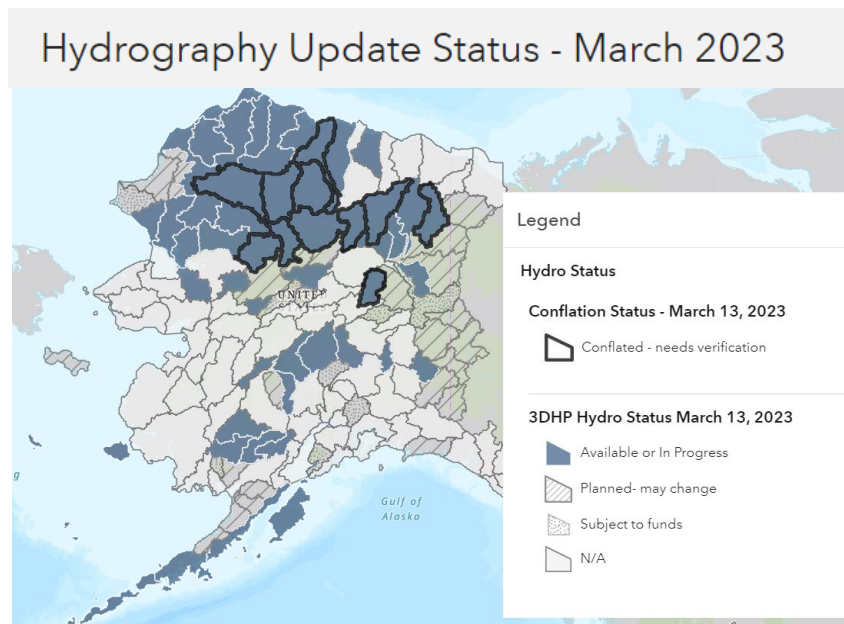
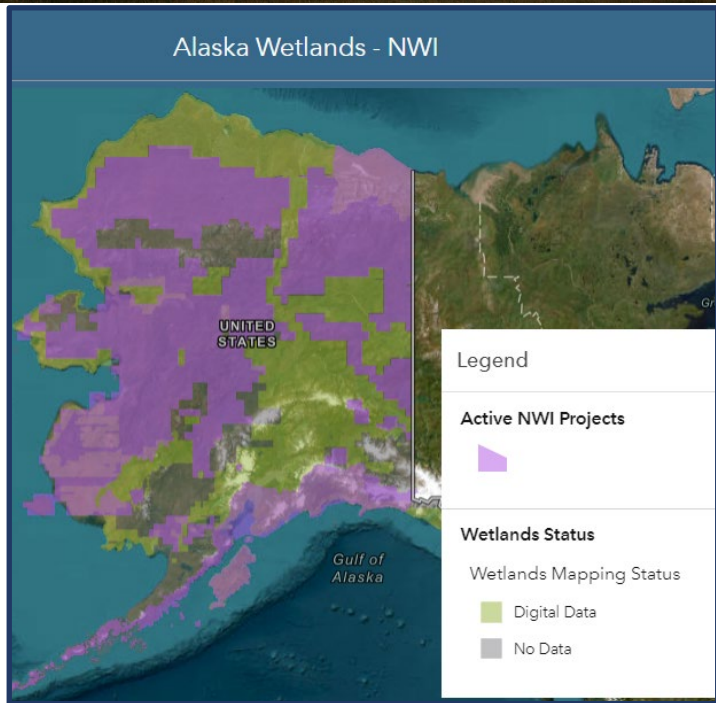
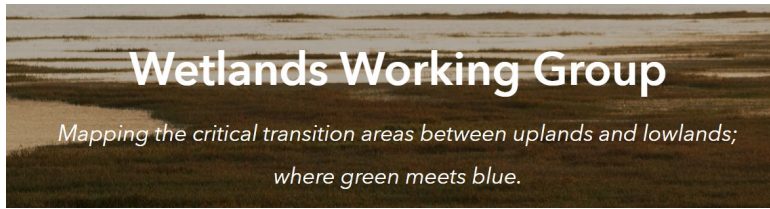


Contracting data collection?

- Ask yourself, do those data already exist? Worth a quick check...
- If contracting, how can those data be archived in public domain for future use
- Don't just add another hard drive to your pile



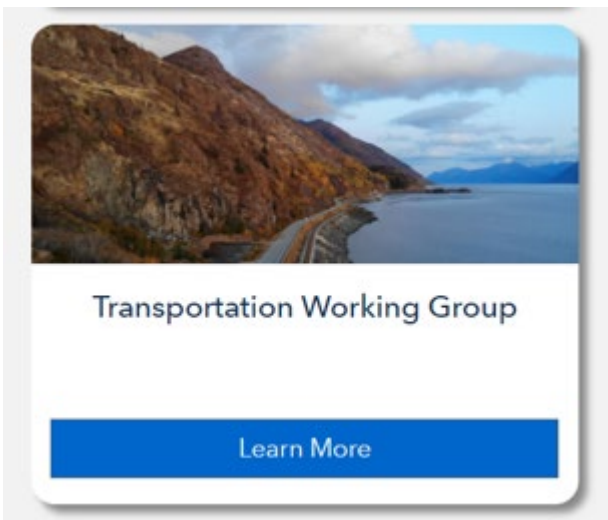
Accessing Data? Where does it exist and where are my access points



The Alaska Geospatial Council provides inter-agency coordination between local, state, federal, tribal, academic and private organizations on geospatial initiatives. Through effective collaboration the council aims to improve the availability and quality of geospatial information and ensure it is publicly available to support data driven decisions.

agc.dnr.alaska.gov

Accessing Data? Where does it exist and where are my access points



Explore Alaska's Land Records via the map and links below:

Choose a Borough or Census Area below and the map will pan and zoom to show the selection. Zoom in more and click on parcels to see popup info from the authoritative data source.

Search Borough or Census Area
No selection

Search by DNR Case ID
No selection

The map displays the following regions:

- North Slope Borough
- Northwest Arctic Borough
- Nome Census Area
- Fairbanks North Star Borough
- Denali Borough
- Kusivak Census Area
- Copper River Census Area
- Bethel Census Area
- Chugach Census Area
- Dillingham Census Area
- City and Borough of Yakutat
- Bristol Bay Borough
- City and Borough of Juneau
- Kodiak Island Borough
- City and Borough of Wrangell
- Aleutians East Borough
- Aleutians West Census Area

Map data: Esri, Garmin, FAO, NOAA, USGS, EPA | SOA DCCED DCRA, US Census. Powered by Esri.

Share this card



The Alaska Geospatial Council provides inter-agency coordination between local, state, federal, tribal, academic and private organizations on geospatial initiatives. Through effective collaboration the council aims to improve the availability and quality of geospatial information and ensure it is publicly available to support data driven decisions.

agc.dnr.alaska.gov

Know Your Geospatial Network

Mission

Coordinate the development and management of geographic information in Alaska



Coastal & Ocean Working Group

[Learn More](#)



Wetlands Working Group

[Learn More](#)



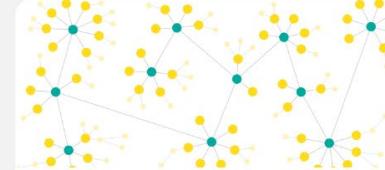
Geodetic Working Group

[Learn More](#)



Vegetation Working Group

[Learn More](#)



Enterprise GIS Working Group

[Learn More](#)



Transportation Working Group

[Learn More](#)



Cadastral Working Group

[Learn More](#)



Imagery and Elevation Working Group

[Learn More](#)



Hydrography Working Group

[Learn More](#)



Soils Working Group

[Learn More](#)



Food Security Working Group

[Learn More](#)

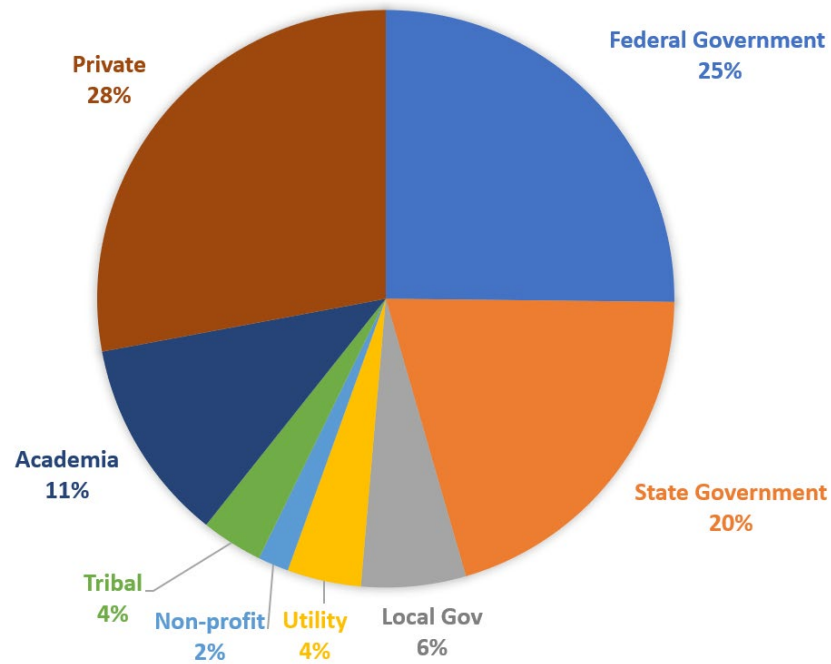


UAS Policy Working Group

[Learn More](#)

Know Your Geospatial Network

- Join AGC Working Groups
- Annual GeoSummit: 325 attendees



**Dena'ina Center
Anchorage, Alaska**

October 25 - 27, 2023

[Attendee Registration](#)



About the Event

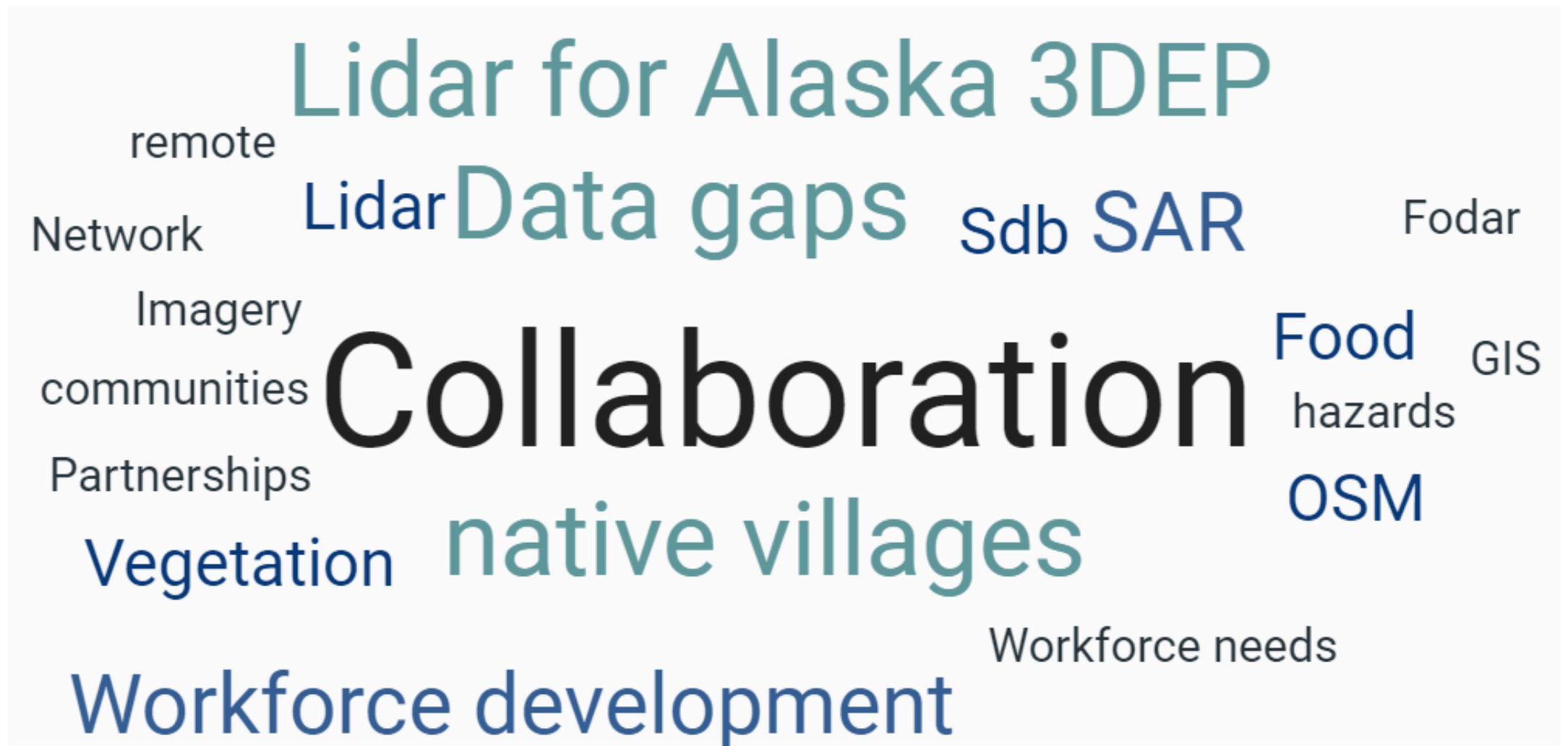
The 2023 Alaska Geosummit will bring together geospatial professionals to share experiences, provide updates on mapping initiatives, and learn about technology trends that provide innovative solutions for problems with a geographic perspective. This event will provide a platform for cultivating relationships and facilitating coordination across all sectors of our community.

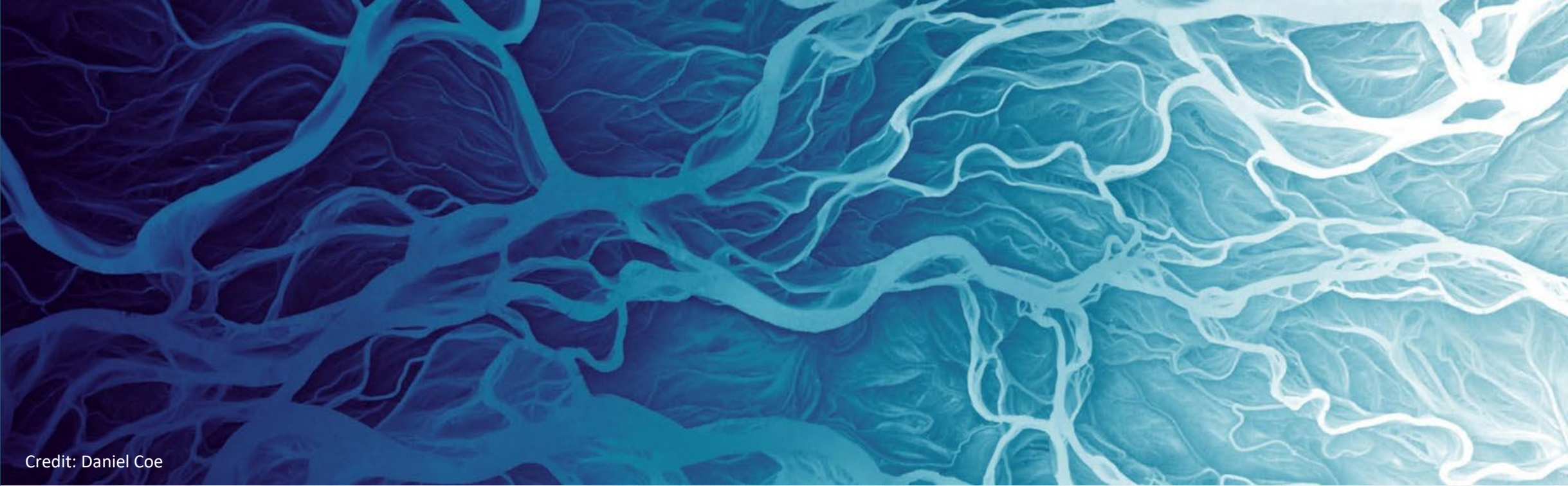
Cultivate - Create - Innovate - Harness

The Power of Geospatial

2023 Alaska GeoSummit

What topic at this week's conference most inspired you?





Credit: Daniel Coe

Leslie Jones, PhD
leslie.jones2@alaska.gov

