



THE STATE
of ALASKA
GOVERNOR MIKE DUNLEAVY

DEPARTMENT OF COMMERCE, COMMUNITY AND ECONOMIC DEVELOPMENT

ALASKA BROADBAND OFFICE
BROADBAND EQUITY, ACCESS, & DEPLOYMENT
CHALLENGE PROCESS

Lisa Von Bargaen
Deputy Director

Alaska Municipal League
December 6, 2023



Infrastructure Investment and Jobs Act (IIJA)

NATIONAL TELECOMMUNICATIONS AND INFORMATION ADMINISTRATION (NTIA) BROADBAND FUNDING PROGRAMS

Broadband Equity, Access, and
Deployment (BEAD):

\$42,450,000,000

Digital Equity Act (DE):

\$2,750,000,000



Broadband Equity, Access, and Deployment

ALLOCATED \$42.45 BILLION FOR ALL STATES AND TERRITORIES

Alaska's Allocation: \$1,017,139,672.42

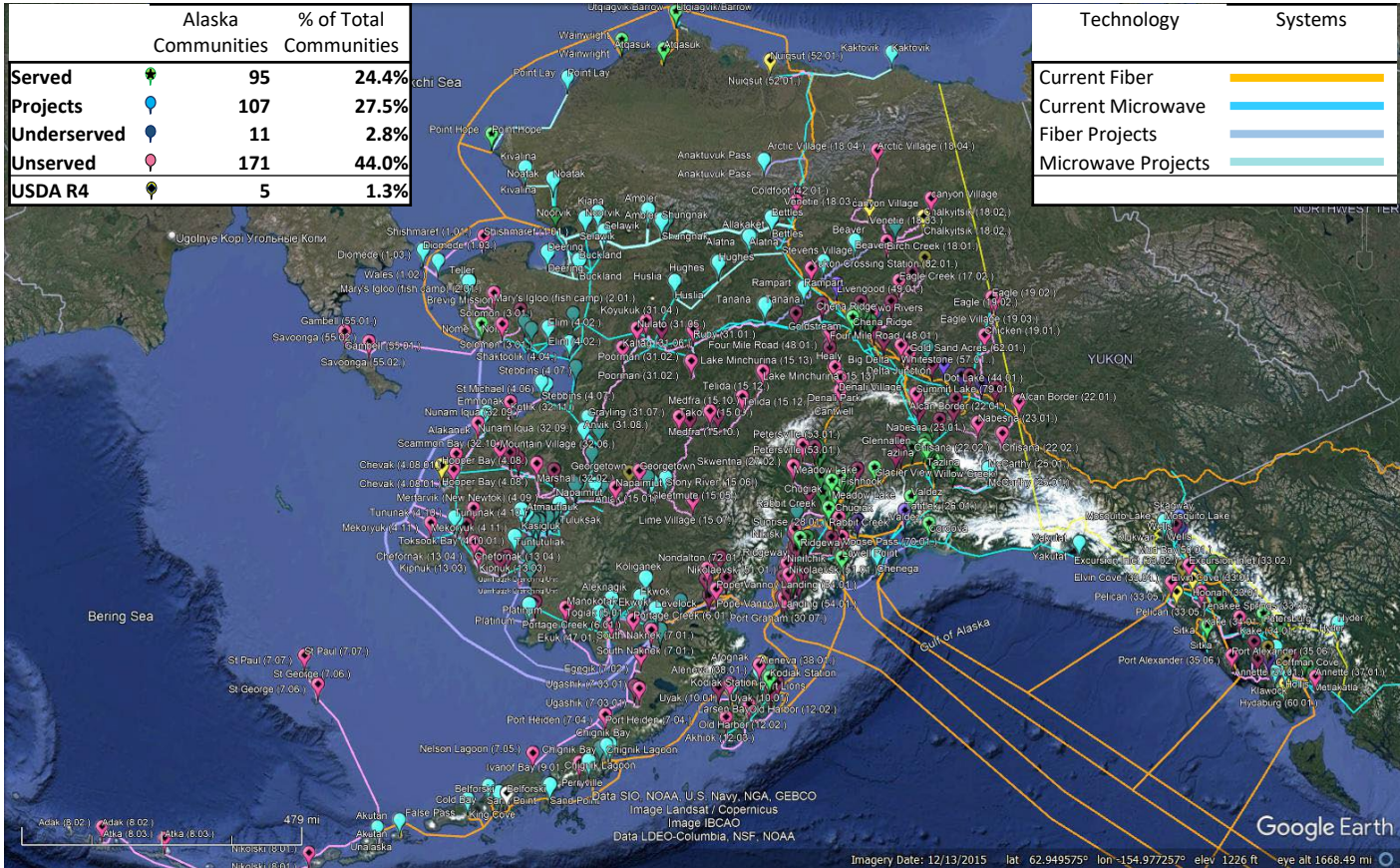
DISBURSEMENTS OF ALASKA'S ALLOCATION

Grants will be based on percentage of locations that are:

- 1st Priority -- Unserved - less than 25Mbps/3Mbps
- 2nd Priority -- Underserved - less than 100Mbps/20Mbps and
- 3rd Priority -- Unserved Community Anchor Institutions (CAI) <1Gbps/1Gbps

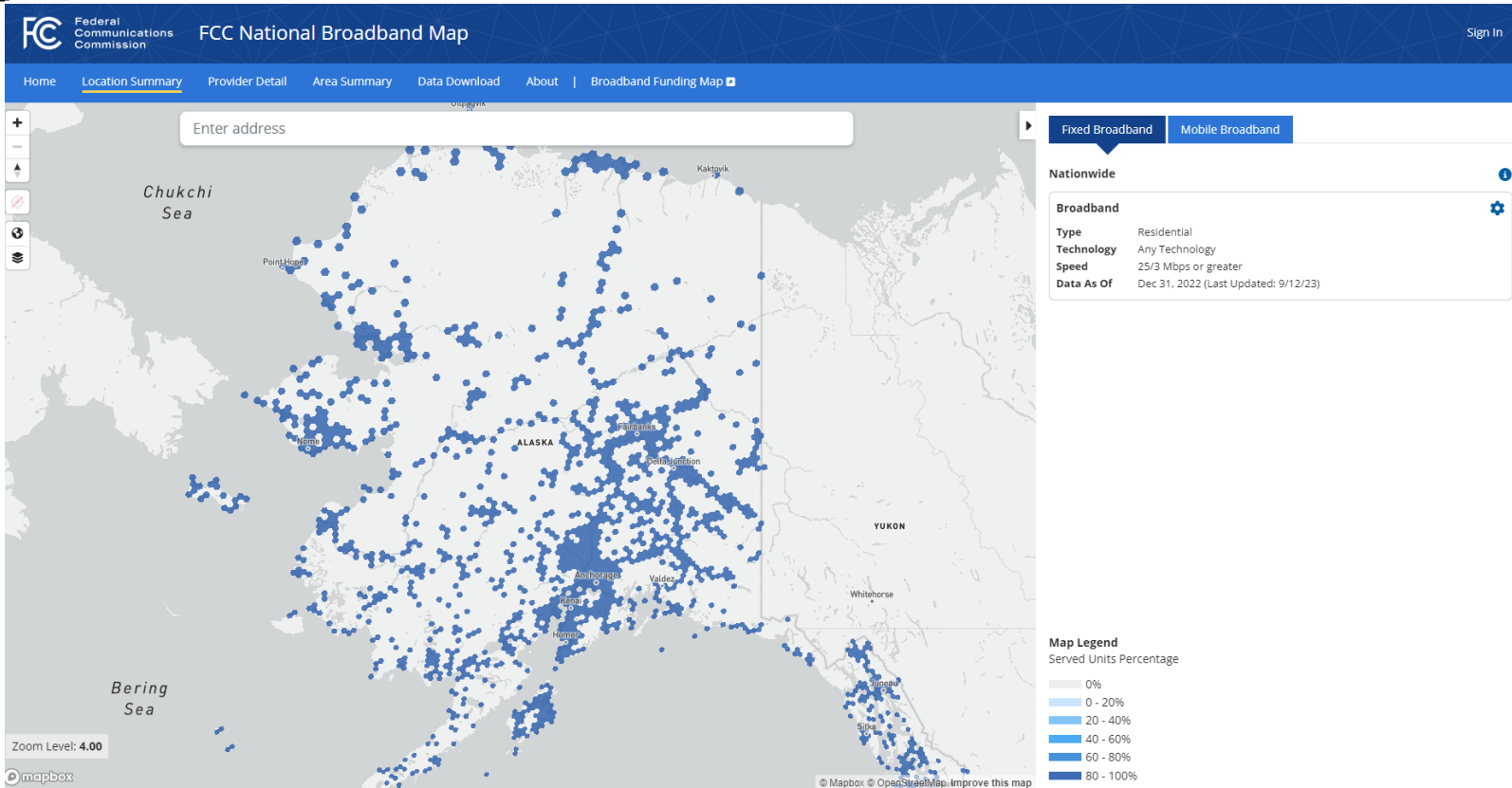


AK Broadband Office (ABO) – Initial Broadband Eval





FCC Broadband Map – Using Any Technology





FCC Broadband Map – Using Any Technology

Fixed Broadband Settings

Data As Of: Dec 31, 2022 (latest)

Business/Residential: Residential

Technologies:

- Any Technology
- All Wired
- All Terrestrial
- All Wired and Licensed Fixed Wireless
- Copper
- Cable/Fiber
 - Cable
 - Fiber
- All Satellite
 - GSO Satellite
 - NGSO Satellite
- All Fixed Wireless
 - Unlicensed Fixed Wireless
 - Licensed Fixed Wireless
- Other

Speed (Mbps):

- ≥ 0.2/0.2
- ≥ 10/1
- ≥ 25/3
- ≥ 100/20
- ≥ 250/25
- ≥ 1000/100

Map Legend: Served Units Percentage

- 0%
- 0 - 20%
- 20 - 40%
- 40 - 60%
- 60 - 80%
- 80 - 100%



FCC Broadband Map – Wired and Licensed Wireless

FCC National Broadband Map

Home Location Summary Provider Detail Area Summary Data Download About

Enter address

Chukchi Sea

Point Hope

Nome

ALASKA

Bering Sea

Zoom Level: 4.00

mapbox

© Mapbox © OpenStreetMap. Improve this map.

Sign In

Fixed Broadband Mobile Broadband

Nationwide

Broadband

Type Residential

Technology All Wired and Licensed Fixed Wireless

Speed 25/3 Mbps or greater

Data As Of Dec 31, 2022 (Last Updated: 9/12/23)

Map Legend

Served Units Percentage

- 0%
- 0 - 20%
- 20 - 40%
- 40 - 60%
- 60 - 80%
- 80 - 100%

Fixed Broadband Settings

Data As Of
Dec 31, 2022 (latest)

Business/Residential
Residential

Technologies

- Any Technology
- All Wired
- All Terrestrial
- All Wired and Licensed Fixed Wireless
- Copper
- Cable/Fiber
 - Cable
 - Fiber
- All Satellite
 - GSO Satellite
 - NGSO Satellite
- All Fixed Wireless
 - Unlicensed Fixed Wireless
 - Licensed Fixed Wireless
- Other

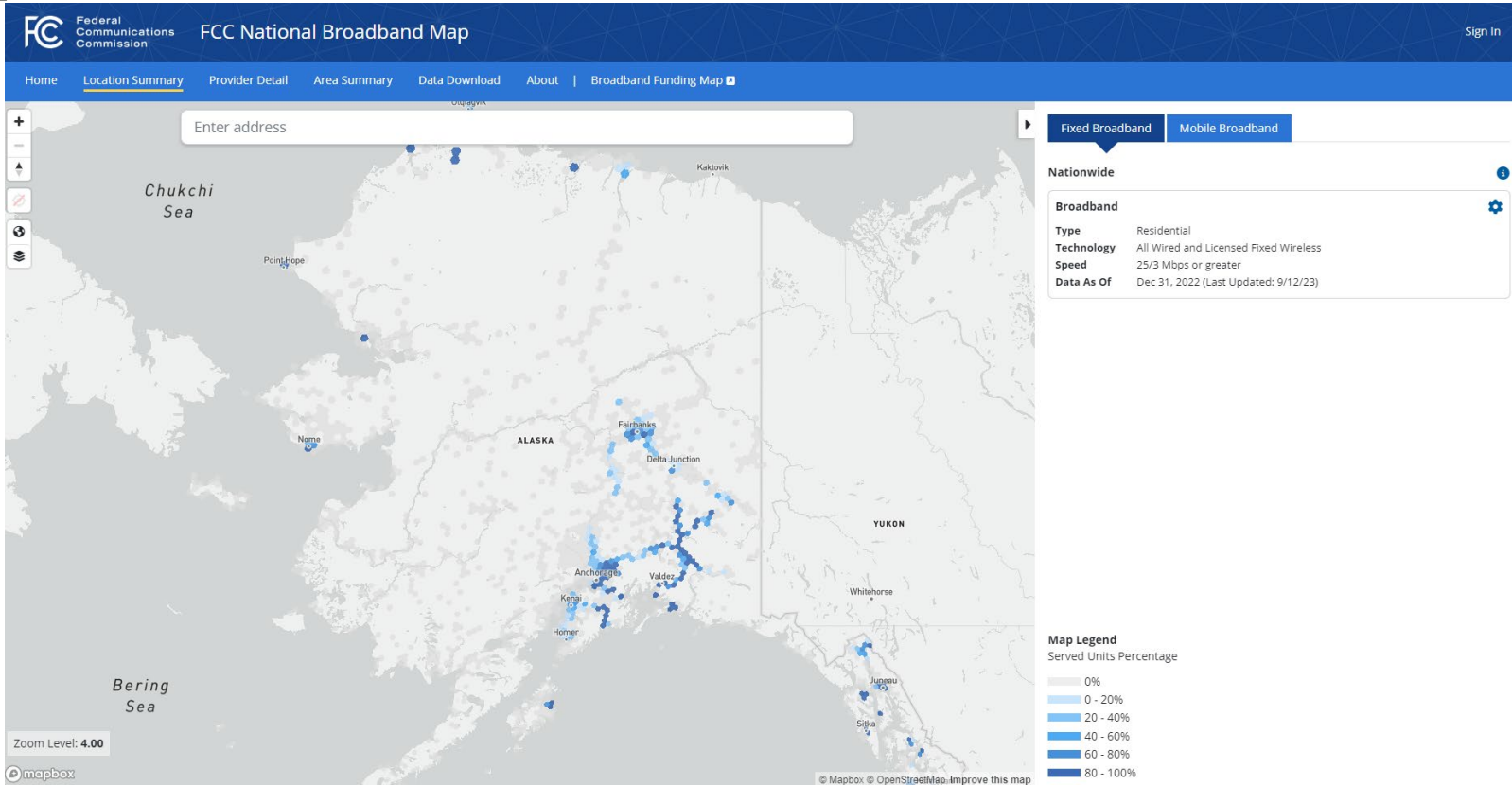
Speed (Mbps)

- $\geq 0.2/0.2$
- $\geq 10/1$
- $\geq 25/3$
- $\geq 100/20$
- $\geq 250/25$
- $\geq 1000/100$

Close



FCC Broadband Map – Alaska Unserved (light grey)





FCC Broadband Map – Zoom in: Nenana 25/3Mbps

Federal Communications Commission
FCC National Broadband Map

Home Location Summary Provider Detail Area Summary Data Download About | Broadband Funding Map

Enter address

Zoom Level: 15.05

mapbox

© Mapbox © OpenStreetMap Improve this map © Mapbox



FCC Broadband Map – Zoom in: Nenana 100/20Mbps

Federal Communications Commission
FCC National Broadband Map

Home Location Summary Provider Detail Area Summary Data Download About | Broadband Funding Map

Enter address

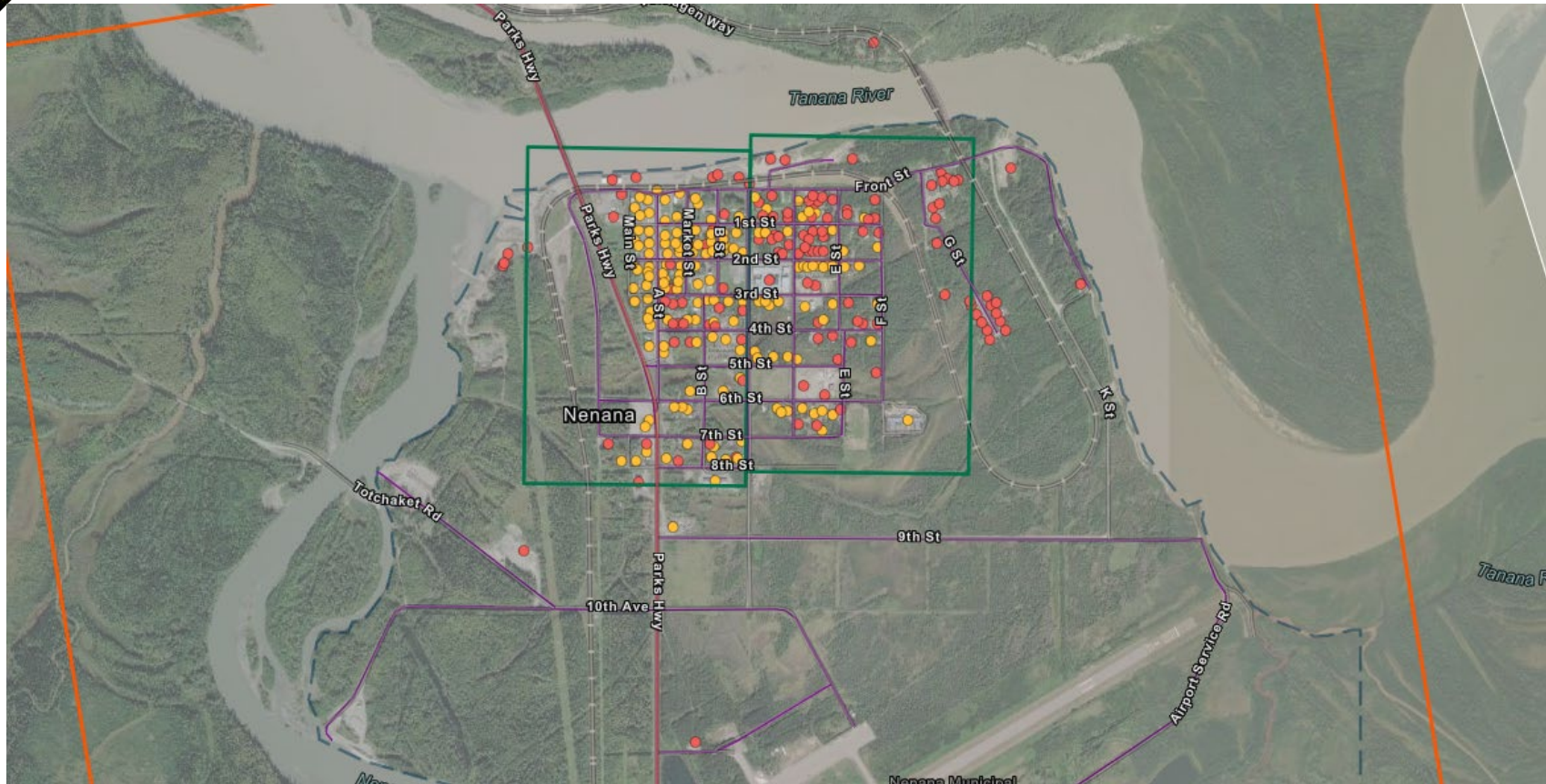
Zoom Level: 15.05

mapbox

Mapbox © OpenStreetMap Improve this map © Mapbox



ABO/NTIA Broadband Serviceable Location (BSL) Map





Mapping Challenge

HIGH LEVEL TYPES OF CHALLENGES

- BSL Level of Broadband Service Only (Unserved, Underserved, Served)
- CAI Level of Broadband Service and Location
- Enforceable Commitments (Federal or State Grants)
- Planned/Funded Projects

ENTITIES AUTHORIZED TO SUBMIT CHALLENGES

- Local Governments (Cities & Boroughs)
- Tribal Governments
- Non-Profit Organizations
- Internet Service Providers (ISPs)



Challenge Portal



Welcome to the Alaska Broadband Office BEAD challenge and rebuttal portal

Click on the buttons to start a BEAD Challenge or, if you are a broadband provider, to submit a rebuttal. You can also browse the Alaska BSL map and CAI list for your reference when submitting a challenge.

[View the Alaska BSL Map](#)

[View the Alaska CAI List](#)

[Submit a new BEAD Challenge](#)

[Submit a Rebuttal \(Broadband Providers Only\)](#)

Frequently Asked Questions

What is BEAD?

BEAD stand for Broadband Equity, Access, and Deployment program. BEAD provides federal funding to make grants to eligible entities for broadband planning, deployment, mapping, equity, and adoption projects and activities. For the State of Alaska, the [Alaska Broadband Office \(ABO\)](#) administers the BEAD grants. [Learn more about BEAD by clicking here.](#)

What is a challenge and rebuttal?

A BEAD challenge is an assertion that the service status of a certain broadband serviceable location (BSL, usually a building) in the [Alaska BSL map](#) is incorrect. You can also submit a challenge for a Community Anchor Institution (CAI, a location with a free-to-use public broadband access point). By submitting a challenge, the ABO will review the information and determine if a correction to that BSL is warranted. Accepted challenges will be used to update the Alaska BSL map that will be used for BEAD grant awards.

Who can submit a challenge or rebuttal?

A formal BEAD challenge can only be submitted by one of the following entities: cities or municipalities, tribal governments or corporations, broadband providers, and non-profit organizations. Challenges from the general public and other not listed entities can submit a challenge for review; however, such information will require sharing with appropriate entities, which the ABO will facilitate.

Only broadband providers can submit a rebuttal, and rebuttals will require a unique challenge number obtained from the ABO.

What types of challenges can be submitted?

There are two different types of challenges that can be submitted, a Broadband Serviceable Locations challenge and a Community Anchor Institution challenge. Each type of challenge has multiple basis on which that challenge can be submitted.

Broadband Serviceable Location Challenge basis: availability, speed, latency, data cap, technology, and business service only (Broadband Providers can also challenge on the basis of planned service or not an enforceable commitment).

Community Anchor Institution Challenge basis for current CAI's: CAI has ceased operations, CAI is a private residence or non-CAI business, the location does not require fiber broadband service appropriate for a CAI, the location fails to meet the definition of a CAI, and other.

Community Anchor Institution Challenge basis for newly proposed CAI's: The location meets the definition of a CAI, this is a new CAI or will be operation by June 30 of 2024, CAI is affiliated with a listed CAI but is a separate location requiring its own broadband, the type of CAI is incorrect, and other.



Challenge Portal

Challenge Information ▾

What type of challenge is being submitted?*

Broadband Serviceable Location Challenge

Community Anchor Institution CAI Challenge

Identify your entity type.*

Municipal Government

Tribal Government

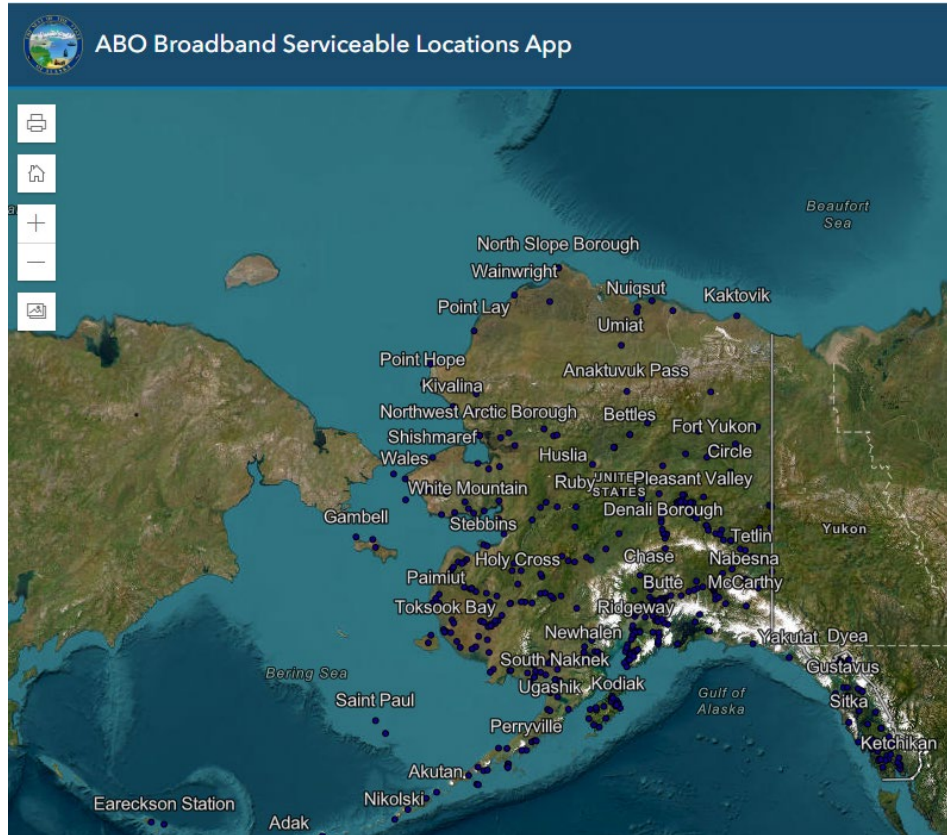
Nonprofit Organization

Broadband Provider

Other

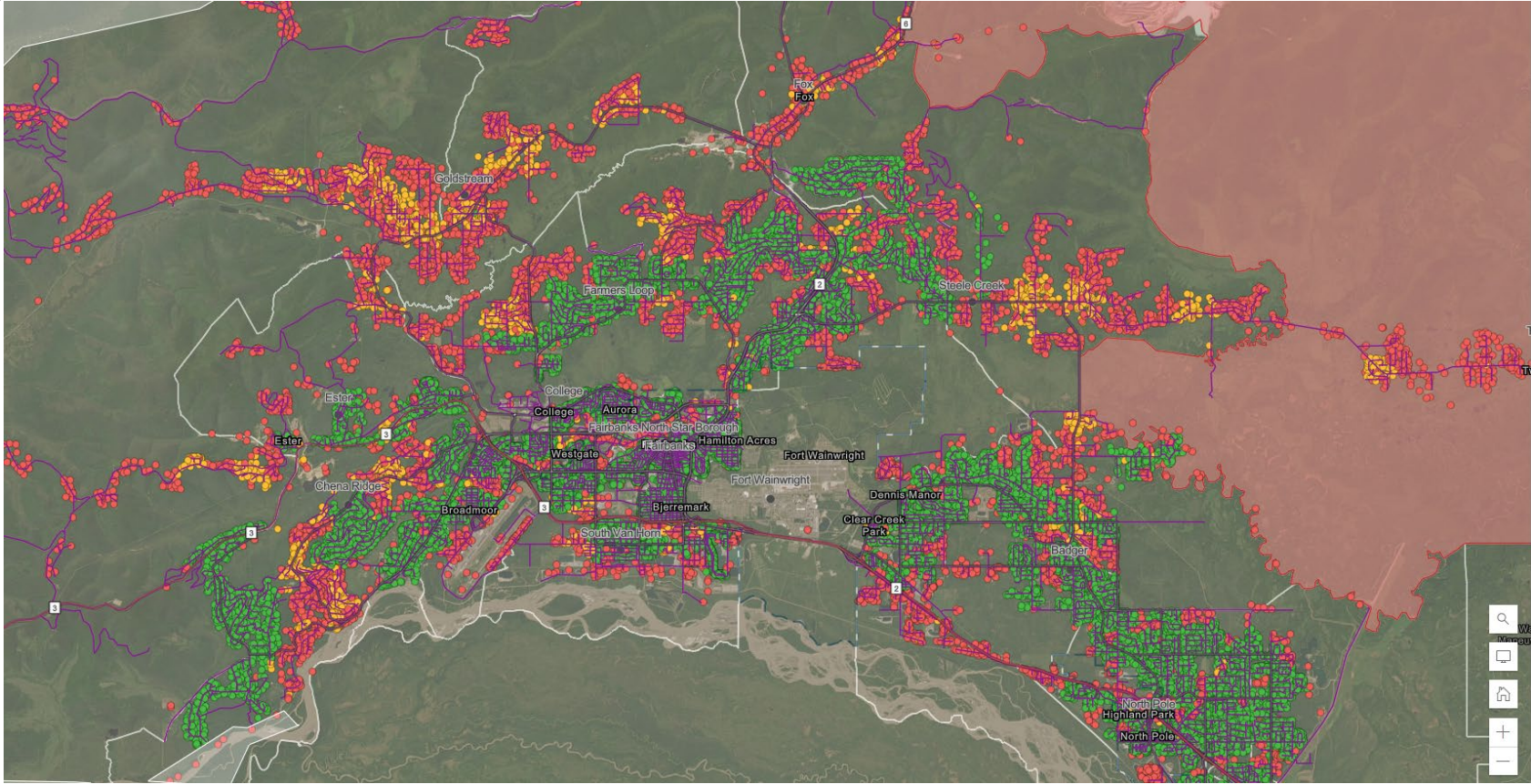


Challenge Portal Map Application





Portal Mapping Application – Greater FNSB





Challenge Portal

What is the basis for this challenge?*

For a list of term definitions for the basis of challenge [click here](#).



Availability



Speed



Latency



Data Cap



Technology



Business Service Only

Please attach one or more files with the evidence relating to this challenge (10 MB maximum). For guidance on the types of evidence appropriate for each basis (speed, availability, etc.) please refer to table 3 in section 7.4 of the current edition of the [BEAD Challenge Process Policy Notice](#)*

Most common image and file formats are supported including but not limited to: PDF, JPEG, PNG, GIF, IMG, docx (Microsoft Word), xlsx (Microsoft Excel), txt, csv

DOCX

IP Placeholder.docx

13.4KB



2

Drop file here or select file

Submit



Challenge Process

FOUR CHALLENGE PHASES (30 DAYS ALLOWED FOR EACH)

1. Publish of Eligible Broadband Serviceable Locations/Portal Training ~ Jan 2024
2. Challenge Phase ~ Feb 2024
3. Rebuttal Phase ~ Mar 2024
4. Final Determination Phase ~ Apr 2024

LOCAL GOVERNMENT CHALLENGES AND POTENTIAL REQUESTS

- Submit Official Challenge on Behalf of the Local Government
- Direct Individual Requester to Submit in the Challenge Portal



BEAD Milestone Dates & ABO Timeline





Digital Equity – Digital Inclusion – Digital Literacy

COVERED POPULATIONS

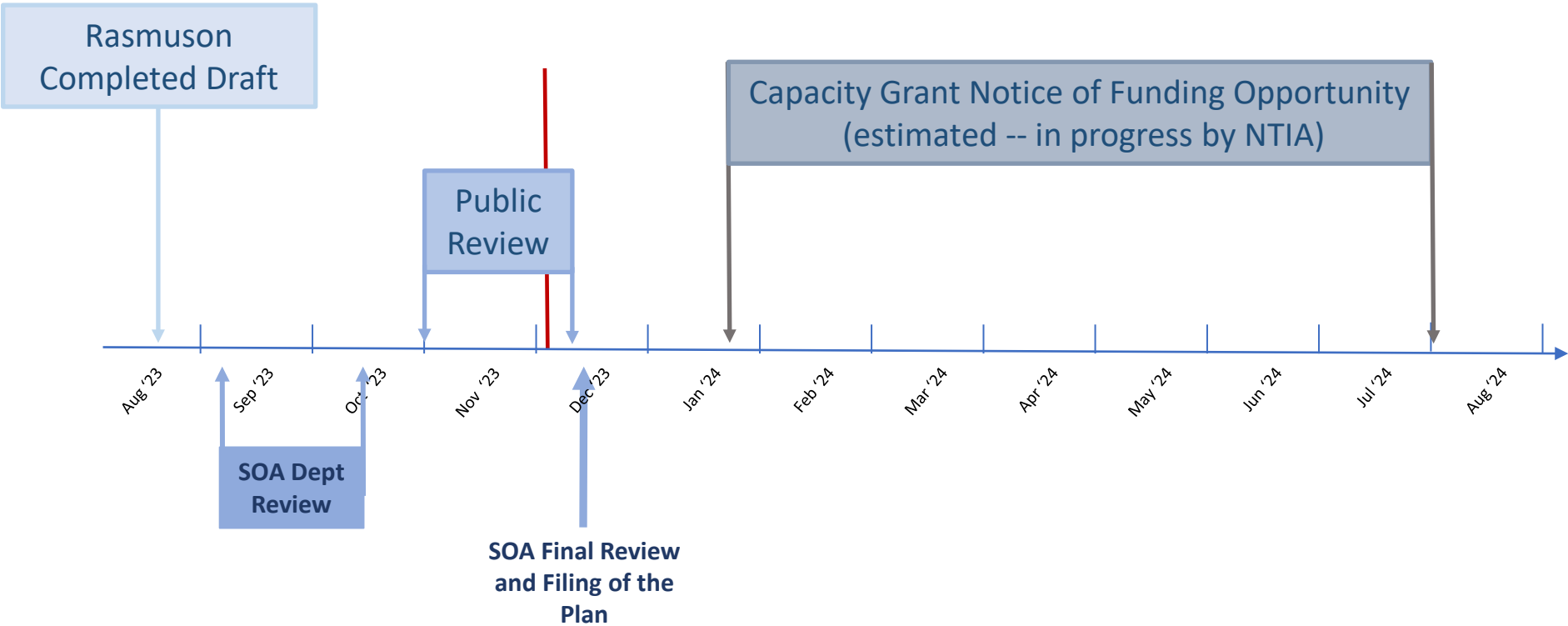
- Aging Individuals
- Households at/or below 150% of the Poverty Level
- Incarcerated Individuals
- Individuals with Disabilities
- Individuals with a Language Barrier
- Individuals who are Members of a Racial or Ethnic Minority
- Individuals who Reside in Rural Areas
- Veterans

FUNDING

- Planning Grants: \$60 Million – Alaska Awarded \$567,800
- Capacity Grants: \$1.44 Billion – Alaska’s Award: TBD
- Competitive Grants: \$1.25 Billion – Alaska’s Award: TBD



Digital Equity Update





Questions?

Contact Information:

Thomas Lochner
Director

thomas.lochner@alaska.gov

(907) 269-4048

Lisa Von Bargaen
Deputy Director

lisa.vonbargaen@alaska.gov

(907) 660-7877

Melissa M. Kookesh
Tribal Liaison

melissa.kookesh@alaska.gov

(907) 465-6466

Kalynn Himes
Administrative Assistant

kalynn.himes@alaska.gov

(907) 269-8159

Thank You!